

## Product datasheet for **TA357522**

### ATG5 Rabbit Polyclonal Antibody

#### Product data:

Product Type:	Primary Antibodies
Applications:	WB
Reactivity:	Human
Host:	Rabbit
Clonality:	Polyclonal
Immunogen:	The immunogen is a synthetic peptide directed towards the middle region of human ATG5
Specificity:	<b>Expected reactivity:</b> Cow, Dog, Guinea Pig, Horse, Human, Mouse, Rabbit, Rat, Sheep, Zebrafish <b>Homology:</b> Cow: 100%; Dog: 100%; Guinea Pig: 100%; Horse: 100%; Human: 100%; Mouse: 100%; Rabbit: 100%; Rat: 100%; Sheep: 100%; Zebrafish: 79%
Formulation:	Liquid. Purified antibody supplied in 1x PBS buffer with 0.09% (w/v) sodium azide and 2% sucrose. <i>Note that this product is shipped as lyophilized powder to China customers.</i>
Concentration:	lot specific
Purification:	Affinity Purified
Conjugation:	Unconjugated
Storage:	For short term use, store at 2-8°C up to 1 week. For long term storage, store at -20°C in small aliquots to prevent freeze-thaw cycles.
Stability:	Shelf life: one year from despatch.
Predicted Protein Size:	32kDa
Gene Name:	autophagy related 5
Database Link:	<a href="#">NP_004840</a> <a href="#">Entrez Gene 9474 Human</a> <a href="#">Q9H1Y0</a>



[View online »](#)

**Background:**

ATG5 is required for autophagy. It conjugates to ATG12 and associates with isolation membrane to form cup-shaped isolation membrane and autophagosome. The conjugate detaches from the membrane immediately before or after autophagosome formation is completed. ATG5 may play an important role in the apoptotic process, possibly within the modified cytoskeleton. Its expression is a relatively late event in the apoptotic process, occurring downstream of caspase activity.

**Synonyms:**

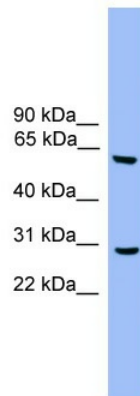
APG5; APG5-LIKE; APG5L; ASP; hAPG5; OTTHUMP00000017824

**Protein Families:**

Druggable Genome

**Protein Pathways:**

Regulation of autophagy, RIG-I-like receptor signaling pathway

**Product images:**

WB Suggested Anti-ATG5 Antibody Titration: 0.2-1 ug/ml  
ELISA Titer: 1:312500  
Positive Control: Human heart