

Product datasheet for **TA357515**

NALP5 (NLRP5) Rabbit Polyclonal Antibody

Product data:

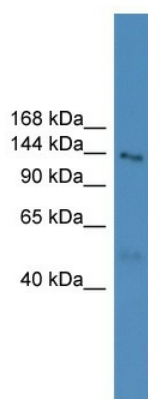
Product Type:	Primary Antibodies
Applications:	WB
Reactivity:	Human
Host:	Rabbit
Clonality:	Polyclonal
Immunogen:	The immunogen is a synthetic peptide directed towards the N terminal region of human NLRP5
Specificity:	Expected reactivity: Human Homology: Human: 100%
Formulation:	Liquid. Purified antibody supplied in 1x PBS buffer with 0.09% (w/v) sodium azide and 2% sucrose. <i>Note that this product is shipped as lyophilized powder to China customers.</i>
Concentration:	lot specific
Purification:	Affinity Purified
Conjugation:	Unconjugated
Storage:	For short term use, store at 2-8°C up to 1 week. For long term storage, store at -20°C in small aliquots to prevent freeze-thaw cycles.
Stability:	Shelf life: one year from despatch.
Predicted Protein Size:	134kDa
Gene Name:	NLR family, pyrin domain containing 5
Database Link:	NP_703148 Entrez Gene 126206 Human P59047
Background:	The protein encoded by this gene belongs to the NALP protein family. Members of the NALP protein family typically contain a NACHT domain, a NACHT-associated domain (NAD), a C-terminal leucine-rich repeat (LRR) region, and an N-terminal pyrin domain (PYD). Expression of this gene is restricted to the oocyte. A mouse gene that encodes a maternal oocyte protein, similar to this encoded protein, is required for normal early embryogenesis.



[View online »](#)

Synonyms: CLR19.8; MATER; NALP5; PAN11; PYPAF8

Product images:



WB Suggested Anti-NLRP5 Antibody Titration: 0.2-1 ug/ml
ELISA Titer: 1:312500
Positive Control: Human Lung