

## Product datasheet for **TA357514**

### Atg12 Rabbit Polyclonal Antibody

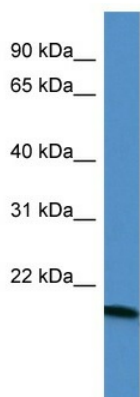
#### Product data:

Product Type:	Primary Antibodies
Applications:	IHC, WB
Reactivity:	Rat
Host:	Rabbit
Clonality:	Polyclonal
Immunogen:	The immunogen is a synthetic peptide corresponding to a region of Rat
Specificity:	<b>Expected reactivity:</b> Cow, Dog, Guinea Pig, Horse, Human, Mouse, Rat, Yeast, Zebrafish <b>Homology:</b> Cow: 100%; Dog: 100%; Guinea Pig: 100%; Horse: 100%; Human: 100%; Mouse: 100%; Rat: 100%; Yeast: 79%; Zebrafish: 86%
Formulation:	Liquid. Purified antibody supplied in 1x PBS buffer with 0.09% (w/v) sodium azide and 2% sucrose. <i>Note that this product is shipped as lyophilized powder to China customers.</i>
Concentration:	lot specific
Purification:	Affinity Purified
Conjugation:	Unconjugated
Storage:	For short term use, store at 2-8°C up to 1 week. For long term storage, store at -20°C in small aliquots to prevent freeze-thaw cycles.
Stability:	Shelf life: one year from despatch.
Predicted Protein Size:	15kDa
Gene Name:	autophagy related 12
Database Link:	<a href="#">NP_001033584</a> <a href="#">Entrez Gene 361321 Rat</a> <a href="#">Q2TBJ5</a>
Background:	Atg12 is the ubiquitin-like protein required for autophagy. NP_001033584 is conjugated to ATG3 and ATG5.
Synonyms:	APG12; APG12-like; APG12L; FBR93; HAPG12



[View online »](#)

Product images:



WB Suggested Anti-Atg12 Antibody Titration: 0.2-1 ug/ml  
ELISA Titer: 1:1562500  
Positive Control: Rat Kidney