

Product datasheet for TA357512

MERTK Rabbit Polyclonal Antibody

Product data:

Product Type:	Primary Antibodies
Applications:	WB
Reactivity:	Human
Host:	Rabbit
Clonality:	Polyclonal
Immunogen:	The immunogen is a synthetic peptide directed towards the N-terminal region of Human MERTK
Specificity:	Expected reactivity: Cow, Dog, Horse, Human, Mouse, Pig, Rabbit, Rat Homology: Cow: 79%; Dog: 93%; Horse: 93%; Human: 100%; Mouse: 86%; Pig: 93%; Rabbit: 93%; Rat: 93%
Formulation:	Liquid. Purified antibody supplied in 1x PBS buffer with 0.09% (w/v) sodium azide and 2% sucrose. <i>Note that this product is shipped as lyophilized powder to China customers.</i>
Concentration:	lot specific
Purification:	Affinity purified
Conjugation:	Unconjugated
Storage:	For short term use, store at 2-8°C up to 1 week. For long term storage, store at -20°C in small aliquots to prevent freeze-thaw cycles.
Stability:	Shelf life: one year from despatch.
Predicted Protein Size:	109kDa
Gene Name:	MER proto-oncogene, tyrosine kinase
Database Link:	NP_006334 Entrez Gene 10461 Human Q12866



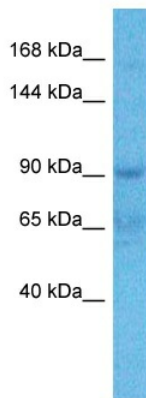
[View online »](#)

Background:

This gene is a member of the MER/AXL/TYRO3 receptor kinase family and encodes a transmembrane protein with two fibronectin type-III domains, two Ig-like C2-type (immunoglobulin-like) domains, and one tyrosine kinase domain. Mutations in this gene have been associated with disruption of the retinal pigment epithelium (RPE) phagocytosis pathway and onset of autosomal recessive retinitis pigmentosa (RP).

Synonyms:

c-mer; MER; MGC133349; RP38

Product images:

Host: Rabbit
Target Name: MERTK
Sample Tissue: COLO205 Cell Lysate
Antibody Dilution: 1.0µg/ml

Host: Rabbit
Target Name: MERTK
Sample Tissue: Human COLO205 Whole Cell
Antibody Dilution: 1ug/ml