

## Product datasheet for **TA357508**

### LRRFIP1 Rabbit Polyclonal Antibody

#### Product data:

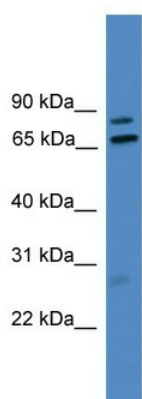
Product Type:	Primary Antibodies
Applications:	WB
Reactivity:	Human
Host:	Rabbit
Clonality:	Polyclonal
Immunogen:	The immunogen is a synthetic peptide directed towards the middle region of Human LRRFIP1
Specificity:	<b>Expected reactivity:</b> Cow, Dog, Guinea Pig, Horse, Human, Mouse, Rabbit <b>Homology:</b> Cow: 100%; Dog: 86%; Guinea Pig: 100%; Horse: 93%; Human: 100%; Mouse: 93%; Rabbit: 93%
Formulation:	Liquid. Purified antibody supplied in 1x PBS buffer with 0.09% (w/v) sodium azide and 2% sucrose. <i>Note that this product is shipped as lyophilized powder to China customers.</i>
Concentration:	lot specific
Purification:	Affinity Purified
Conjugation:	Unconjugated
Storage:	For short term use, store at 2-8°C up to 1 week. For long term storage, store at -20°C in small aliquots to prevent freeze-thaw cycles.
Stability:	Shelf life: one year from despatch.
Predicted Protein Size:	73kDa
Gene Name:	leucine rich repeat (in FLII) interacting protein 1
Database Link:	<a href="#">NP_001131022</a> <a href="#">Entrez Gene 9208 Human</a> <a href="#">E9PGZ2</a>
Background:	LRRFIP1 is a transcriptional repressor which preferentially binds to the GC-rich consensus sequence (5'-AGCCCCGGCG-3') and may regulate expression of TNF, EGFR and PDGFA. LRRFIP1 may control smooth muscle cells proliferation following artery injury through PDGFA repression. LRRFIP1 may also bind double-stranded RNA.
Synonyms:	FLAP-1; FLIAP1; GCF-2; GCF2; HUF1-1; MGC10947; MGC119738; MGC119739; TRIP



[View online »](#)

Protein Families: Transcription Factors

### Product images:



WB Suggested Anti-LRRFIP1 Antibody Titration:  
0.2-1 ug/ml  
ELISA Titer: 1:312500  
Positive Control: U937 cell lysate