

Product datasheet for **TA357504**

Caspase 10 (CASP10) Rabbit Polyclonal Antibody

Product data:

Product Type:	Primary Antibodies
Applications:	WB
Reactivity:	Human
Host:	Rabbit
Clonality:	Polyclonal
Immunogen:	The immunogen is a synthetic peptide directed towards the c-terminal region of Human CASP10
Specificity:	Expected reactivity: Human Homology: Human: 100%
Formulation:	Liquid. Purified antibody supplied in 1x PBS buffer with 0.09% (w/v) sodium azide and 2% sucrose. <i>Note that this product is shipped as lyophilized powder to China customers.</i>
Concentration:	lot specific
Purification:	Affinity Purified
Conjugation:	Unconjugated
Storage:	For short term use, store at 2-8°C up to 1 week. For long term storage, store at -20°C in small aliquots to prevent freeze-thaw cycles.
Stability:	Shelf life: one year from despatch.
Predicted Protein Size:	57kDa
Gene Name:	caspase 10
Database Link:	NP_116759 Entrez Gene 843 Human Q92851-4



[View online »](#)

Background:

This gene encodes a protein which is a member of the cysteine-aspartic acid protease (caspase) family. Sequential activation of caspases plays a central role in the execution-phase of cell apoptosis. Caspases exist as inactive proenzymes which undergo proteolytic processing at conserved aspartic residues to produce two subunits, large and small, that dimerize to form the active enzyme. This protein cleaves and activates caspases 3 and 7, and the protein itself is processed by caspase 8. Mutations in this gene are associated with type IIA autoimmune lymphoproliferative syndrome, non-Hodgkin lymphoma and gastric cancer.

Synonyms:

ALPS2; CASP-10; FLICE2; MCH4

Protein Families:

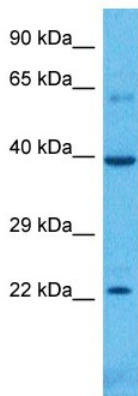
Druggable Genome, Protease

Protein Pathways:

Apoptosis, RIG-I-like receptor signaling pathway

Product images:


Host: Rabbit
 Target Name: CASP10
 Sample Type: HCT15 Whole Cell lysates
 Antibody Dilution: 1.0ug/ml
 There is BioGPS gene expression data showing that CASP10 is expressed in HCT15



Host: Rabbit
 Target Name: CASP10
 Sample Type: MCF7 Cell Lysate
 Antibody Dilution: 1.0µg/ml

Host: Rabbit
 Target Name: CASP10
 Sample Tissue: Human MCF7 Whole Cell
 Antibody Dilution: 1 ug/ml