

Product datasheet for **TA357503**

Casp2 Rabbit Polyclonal Antibody

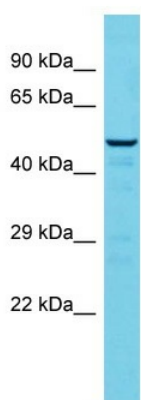
Product data:

Product Type:	Primary Antibodies
Applications:	WB
Reactivity:	Mouse
Host:	Rabbit
Clonality:	Polyclonal
Immunogen:	The immunogen is a synthetic peptide directed towards the middle region of Mouse Casp2
Specificity:	Expected reactivity: Cow, Dog, Guinea Pig, Horse, Human, Mouse, Pig, Rabbit, Rat Homology: Cow: 91%; Dog: 93%; Guinea Pig: 83%; Horse: 100%; Human: 100%; Mouse: 100%; Pig: 100%; Rabbit: 93%; Rat: 100%
Formulation:	Liquid. Purified antibody supplied in 1x PBS buffer with 0.09% (w/v) sodium azide and 2% sucrose. <i>Note that this product is shipped as lyophilized powder to China customers.</i>
Concentration:	lot specific
Purification:	Affinity Purified
Conjugation:	Unconjugated
Storage:	For short term use, store at 2-8°C up to 1 week. For long term storage, store at -20°C in small aliquots to prevent freeze-thaw cycles.
Stability:	Shelf life: one year from despatch.
Predicted Protein Size:	51kDa
Gene Name:	caspase 2
Database Link:	NP_031636 Entrez Gene 12366 Mouse P29594
Background:	Casp2 is involved in the activation cascade of caspases responsible for apoptosis execution. It might function by either activating some proteins required for cell death or inactivating proteins necessary for cell survival. It may be important in multistep carcinogenesis.
Synonyms:	CASP-2; ICH-1L; ICH-1L/1S; ICH1; NEDD-2; NEDD2

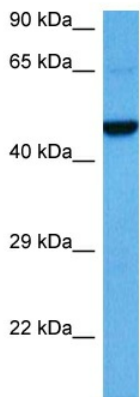


[View online »](#)

Product images:

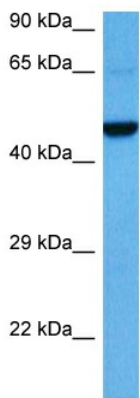


Host: Rabbit
 Target Name: Casp2
 Sample Type: Mouse Testis lysates
 Antibody Dilution: 1.0ug/ml



Host: Rabbit
 Target Name: Casp2
 Sample Type: Mouse Liver Lysate
 Antibody Dilution: 1.0µg/ml

Host: Rabbit
 Target Name: CASP2
 Sample Tissue: Mouse Liver
 Antibody Dilution: 1ug/ml



Host: Rabbit
 Target Name: Casp2
 Sample Type: Mouse Liver Lysate
 Antibody Dilution: 1.0µg/ml

Host: Mouse
 Target Name: CASP2
 Sample Tissue: Mouse Liver
 Antibody Dilution: 1ug/ml