

Product datasheet for **TA357500**

TMEM166 (EVA1A) Rabbit Polyclonal Antibody

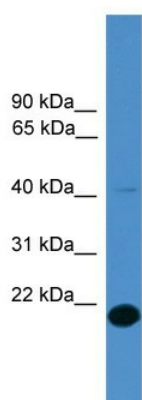
Product data:

Product Type:	Primary Antibodies
Applications:	WB
Reactivity:	Human
Host:	Rabbit
Clonality:	Polyclonal
Immunogen:	The immunogen is a synthetic peptide directed towards the middle region of human TMEM166
Specificity:	Expected reactivity: Dog, Horse, Human, Pig, Rabbit Homology: Dog: 86%; Horse: 79%; Human: 100%; Pig: 79%; Rabbit: 79%
Formulation:	Liquid. Purified antibody supplied in 1x PBS buffer with 0.09% (w/v) sodium azide and 2% sucrose. <i>Note that this product is shipped as lyophilized powder to China customers.</i>
Concentration:	lot specific
Purification:	Affinity Purified
Conjugation:	Unconjugated
Storage:	For short term use, store at 2-8°C up to 1 week. For long term storage, store at -20°C in small aliquots to prevent freeze-thaw cycles.
Stability:	Shelf life: one year from despatch.
Predicted Protein Size:	17kDa
Gene Name:	eva-1 homolog A, regulator of programmed cell death
Database Link:	NP_001128504 Entrez Gene 84141 Human Q9H8M9
Background:	TMEM166 belongs to the FAM176 family. It acts as a regulator of programmed cell death, mediating both autophagy and apoptosis.
Synonyms:	BC014699; Fam176a; RGD1559797; Tmem166
Protein Families:	Transmembrane



[View online »](#)

Product images:



WB Suggested Anti-TMEM166 Antibody Titration:
0.2-1 ug/ml
ELISA Titer: 1:312500
Positive Control: 293T cell lysate