

Product datasheet for **TA357493**

Rubicon (RUBCN) Rabbit Polyclonal Antibody

Product data:

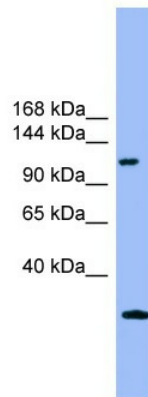
Product Type:	Primary Antibodies
Applications:	WB
Reactivity:	Human
Host:	Rabbit
Clonality:	Polyclonal
Immunogen:	The immunogen is a synthetic peptide directed towards the middle region of human KIAA0226
Specificity:	Expected reactivity: Cow, Dog, Guinea Pig, Human, Mouse, Rabbit, Rat Homology: Cow: 85%; Dog: 85%; Guinea Pig: 92%; Human: 100%; Mouse: 92%; Rabbit: 85%; Rat: 100%
Formulation:	Liquid. Purified antibody supplied in 1x PBS buffer with 0.09% (w/v) sodium azide and 2% sucrose.
Concentration:	lot specific
Purification:	Affinity Purified
Conjugation:	Unconjugated
Storage:	For short term use, store at 2-8°C up to 1 week. For long term storage, store at -20°C in small aliquots to prevent freeze-thaw cycles.
Stability:	Shelf life: one year from despatch.
Predicted Protein Size:	103kDa
Gene Name:	RUN and cysteine rich domain containing beclin 1 interacting protein
Database Link:	NP_001139114 Entrez Gene 9711 Human Q92622-2



[View online »](#)

Background:

The protein encoded by this gene is a negative regulator of autophagy and endocytic trafficking and controls endosome maturation. This protein contains two conserved domains, an N-terminal RUN domain and a C-terminal DUF4206 domain. The RUN domain is involved in Ras-like GTPase signaling, and the DUF4206 domain contains a diacylglycerol (DAG) binding-like motif. Mutation in this gene results in deletion of the DAG binding-like motif and causes a recessive ataxia. Alternatively spliced transcript variants encoding distinct isoforms have been found for this gene.

Product images:

WB Suggested Anti-KIAA0226 Antibody Titration:
0.2-1 ug/ml
ELISA Titer: 1:1562500
Positive Control: Human Placenta