

Product datasheet for **TA357492**

Presenilin 1 (PSEN1) Rabbit Polyclonal Antibody

Product data:

Product Type:	Primary Antibodies
Applications:	IHC, IP, WB
Reactivity:	Human, Mouse
Host:	Rabbit
Clonality:	Polyclonal
Immunogen:	The immunogen is a synthetic peptide directed towards the middle region of human PSEN1
Specificity:	Expected reactivity: Cow, Dog, Guinea Pig, Horse, Human, Mouse, Rabbit, Rat Homology: Cow: 86%; Dog: 86%; Guinea Pig: 100%; Horse: 86%; Human: 100%; Mouse: 93%; Rabbit: 100%; Rat: 85%
Formulation:	Liquid. Purified antibody supplied in 1x PBS buffer with 0.09% (w/v) sodium azide and 2% sucrose. <i>Note that this product is shipped as lyophilized powder to China customers.</i>
Concentration:	lot specific
Purification:	Affinity Purified
Conjugation:	Unconjugated
Storage:	For short term use, store at 2-8°C up to 1 week. For long term storage, store at -20°C in small aliquots to prevent freeze-thaw cycles.
Stability:	Shelf life: one year from despatch.
Predicted Protein Size:	53kDa
Gene Name:	presenilin 1
Database Link:	NP_000012 Entrez Gene 19164 Mouse Entrez Gene 5663 Human P49768



[View online »](#)

Background:

Alzheimer's disease (AD) patients with an inherited form of the disease carry mutations in the presenilin proteins (PSEN1; PSEN2) or in the amyloid precursor protein (APP). These disease-linked mutations result in increased production of the longer form of amyloid-beta (main component of amyloid deposits found in AD brains). Presenilins are postulated to regulate APP processing through their effects on gamma-secretase, an enzyme that cleaves APP. Also, it is thought that the presenilins are involved in the cleavage of the Notch receptor, such that they either directly regulate gamma-secretase activity or themselves are protease enzymes. Several alternatively spliced transcript variants encoding different isoforms have been identified for this gene, the full-length nature of only some have been determined.

Synonyms:

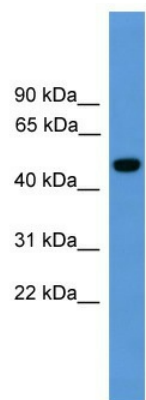
AD3; FAD; OTTHUMP00000180589; PS-1; PS1; PSNL1; S182

Protein Families:

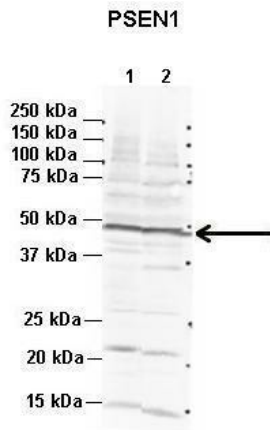
Druggable Genome, Protease, Transmembrane

Protein Pathways:

Alzheimer's disease, Neurotrophin signaling pathway, Notch signaling pathway, Wnt signaling pathway

Product images:

WB Suggested Anti-PSEN1 Antibody Titration: 0.2-1 ug/ml
ELISA Titer: 1:312500
Positive Control: Human brain



See Immunoblot 2 Data and Customer Feedback for more information

Lanes:

1. Mouse WT brain extract (80ug) 2. Rat brain extract (80ug)

Primary Antibody Dilution:

2ug/ml

Secondary Antibody:

IRDye 800CW goat anti-rabbit from Li-COR Bioscience

Secondary Antibody Dilution:

1: 20,000

Gene Name:

PSEN1

Submitted by:

Dr. Yuzhi Chen, University of Arkansas for Medical Science

PSEN1



Rabbit Anti-PSEN1
Sample Type: Human 721_B
Antibody Concentration: 1ug/mL

Host: Rabbit

Target Name: PSEN1

Sample Type: Human 721_B

Antibody Dilution: 1.0ug/ml
PSEN1 is strongly supported by BioGPS gene expression data to be expressed in Human 721_B cells

PSEN1



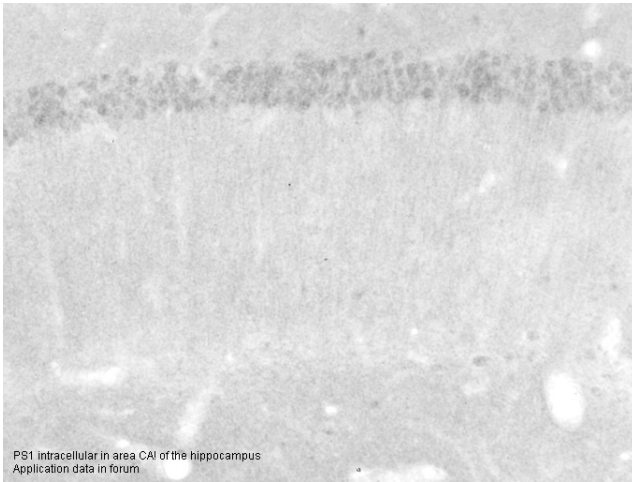
Rabbit Anti-PSEN1
Sample Type: Human Adult Placenta
Antibody Concentration: 1ug/mL

Host: Rabbit

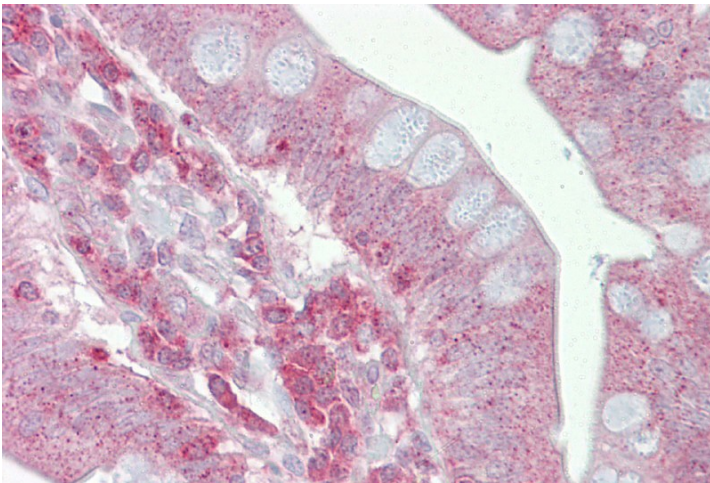
Target Name: PSEN1

Sample Type: Human Adult Placenta

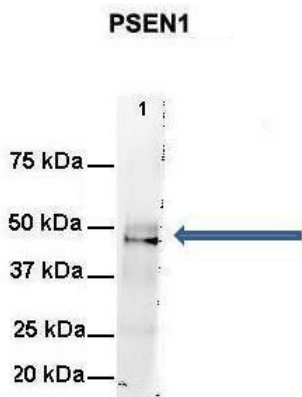
Antibody Dilution: 1.0ug/ml



The PSEN1 antibody (#ARP58941) works fine in 4% paraformaldehyde fixed tissue sections (30 um), they were cut on a sliding, freezing microtome. We stained it overnight 1:500 followed with a biotinylated secondary, followed by an Avidin/oxidase tertiary antibody, final staining with metal-intensified DAB. Similarly, both LRP antibodies (#ARP58562 & ARP58563) work fine (stain appropriately) with this procedure. We are still evaluating the BACE1 antibody, it seems to work, too. -Dr. Thomas van Groen



Immunohistochemistry with Small intestine tissue



See Other Application 2 Data and Customer Feedback for more information

Amount and Sample Type:
500 ug mouse brain homogenate
Amount of IP Antibody:
6 ug
Primary Antibody:
PSEN1
Primary Antibody Dilution:
1:500
Secondary Antibody:
Goat anti-rabbit Alexa-Fluor 594
Secondary Antibody Dilution:
1:5000
Gene Name:
PSEN1
Submitted by:
Dr. Yuzhi Chen, University of Arkansas for Medical Science