

Product datasheet for **TA357491**

Bcl2 Binding component 3 (BBC3) Rabbit Polyclonal Antibody

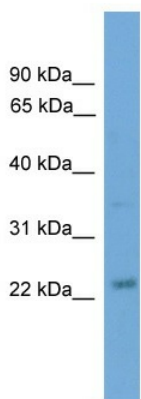
Product data:

Product Type:	Primary Antibodies
Applications:	WB
Reactivity:	Human
Host:	Rabbit
Clonality:	Polyclonal
Immunogen:	The immunogen is a synthetic peptide directed towards the N terminal region of human BBC3
Specificity:	Expected reactivity: Human Homology: Human: 100%
Formulation:	Liquid. Purified antibody supplied in 1x PBS buffer with 0.09% (w/v) sodium azide and 2% sucrose. <i>Note that this product is shipped as lyophilized powder to China customers.</i>
Concentration:	lot specific
Purification:	Affinity Purified
Conjugation:	Unconjugated
Storage:	For short term use, store at 2-8°C up to 1 week. For long term storage, store at -20°C in small aliquots to prevent freeze-thaw cycles.
Stability:	Shelf life: one year from despatch.
Predicted Protein Size:	26kDa
Gene Name:	BCL2 binding component 3
Database Link:	NP_001120712 Entrez Gene 27113 Human Q96PG8
Background:	BBC3 is an essential mediator of p53-dependent and p53-independent apoptosis.
Synonyms:	FLJ42994; JFY-1; JFY1; PUMA
Protein Families:	Druggable Genome
Protein Pathways:	Huntington's disease, p53 signaling pathway

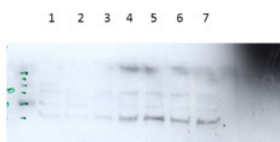


[View online »](#)

Product images:



WB Suggested Anti-BBC3 Antibody Titration: 0.2-1 ug/ml
 ELISA Titer: 1:1562500
 Positive Control: Human Placenta



Western Blot
 Lane 1: Hep3B cells, 10 ug
 Lane 2: Hep3B cells, 25 ug
 Lane 3: Hep3B treated, 10 ug
 Lane 4: Hep3B treated, 25 ug
 Lane 5: Hep3B treated, 50 ug
 Lane 6: HepG2 untreated, 25 ug
 Lane 7: HepG2 treated, 25 ug
 Dilution: 1:1000

BBC3 antibody - N-terminal region (TA357491) validated by WB using Hep3B, HepG2 cells at 1:1000.

Application data in forum