

Product datasheet for **TA357489**

RGS19 Rabbit Polyclonal Antibody

Product data:

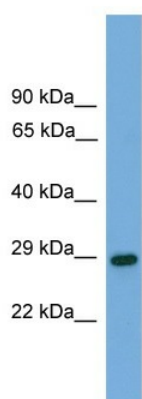
Product Type:	Primary Antibodies
Applications:	WB
Reactivity:	Human
Host:	Rabbit
Clonality:	Polyclonal
Immunogen:	The immunogen is a synthetic peptide directed towards the N terminal region of human RGS19
Specificity:	Expected reactivity: Cow, Horse, Human, Mouse, Rat Homology: Cow: 85%; Horse: 86%; Human: 100%; Mouse: 86%; Rat: 86%
Formulation:	Liquid. Purified antibody supplied in 1x PBS buffer with 0.09% (w/v) sodium azide and 2% sucrose. <i>Note that this product is shipped as lyophilized powder to China customers.</i>
Concentration:	lot specific
Purification:	Affinity Purified
Conjugation:	Unconjugated
Storage:	For short term use, store at 2-8°C up to 1 week. For long term storage, store at -20°C in small aliquots to prevent freeze-thaw cycles.
Stability:	Shelf life: one year from despatch.
Predicted Protein Size:	25kDa
Gene Name:	regulator of G-protein signaling 19
Database Link:	NP_001034556 Entrez Gene 10287 Human P49795
Background:	G proteins mediate a number of cellular processes. RGS19 belongs to the RGS (regulators of G-protein signaling) family and specifically interacts with G protein, GAI3. This protein is a guanosine triphosphatase-activating protein that functions to down-regulate Galpha i/Galpha q-linked signaling.
Synonyms:	GAIP; GNAI3IP; RGSGAIP



[View online »](#)

Protein Families: Druggable Genome

Product images:



WB Suggested Anti-RGS19 Antibody Titration: 0.2-1 ug/ml
ELISA Titer: 1:1562500
Positive Control: Human brain