

## Product datasheet for **TA357487**

### ATG4A Rabbit Polyclonal Antibody

#### Product data:

Product Type:	Primary Antibodies
Applications:	WB
Reactivity:	Human
Host:	Rabbit
Clonality:	Polyclonal
Immunogen:	The immunogen is a synthetic peptide directed towards the middle region of human ATG4A
Specificity:	<b>Expected reactivity:</b> Human, Rat <b>Homology:</b> Human: 100%; Rat: 83%
Formulation:	Liquid. Purified antibody supplied in 1x PBS buffer with 0.09% (w/v) sodium azide and 2% sucrose. <i>Note that this product is shipped as lyophilized powder to China customers.</i>
Concentration:	lot specific
Purification:	Affinity Purified
Conjugation:	Unconjugated
Storage:	For short term use, store at 2-8°C up to 1 week. For long term storage, store at -20°C in small aliquots to prevent freeze-thaw cycles.
Stability:	Shelf life: one year from despatch.
Predicted Protein Size:	28kDa
Gene Name:	autophagy related 4A cysteine peptidase
Database Link:	<a href="#">NP_443168.2</a> <a href="#">Entrez Gene 115201 Human</a> <a href="#">Q8WYN0</a>



[View online »](#)

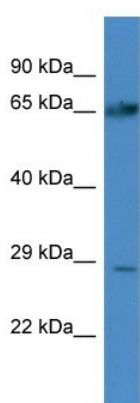
**Background:** Autophagy is the process by which endogenous proteins and damaged organelles are destroyed intracellularly. Autophagy is postulated to be essential for cell homeostasis and cell remodeling during differentiation, metamorphosis, non-apoptotic cell death, and aging. Reduced levels of autophagy have been described in some malignant tumors, and a role for autophagy in controlling the unregulated cell growth linked to cancer has been proposed. This gene encodes a member of the autophagin protein family. The encoded protein is also designated as a member of the C-54 family of cysteine proteases. Transcript variants that encode distinct isoforms have been identified.

**Synonyms:** APG4A; AUTL2; Autophagin-2; hAPG4A

**Protein Families:** Protease

**Protein Pathways:** Regulation of autophagy

### Product images:



Host: Rabbit  
Target Name: ATG4A  
Sample Type: A549 Whole Cell lysates  
Antibody Dilution: 1.0ug/ml