

## Product datasheet for **TA357483**

### PEA15 Rabbit Polyclonal Antibody

#### Product data:

Product Type:	Primary Antibodies
Applications:	IHC, WB
Reactivity:	Human
Host:	Rabbit
Clonality:	Polyclonal
Immunogen:	The immunogen is a synthetic peptide directed towards the C terminal region of human PEA15
Specificity:	<b>Expected reactivity:</b> Cow, Dog, Guinea Pig, Horse, Human, Mouse, Rabbit, Rat, Zebrafish <b>Homology:</b> Cow: 100%; Dog: 100%; Guinea Pig: 100%; Horse: 100%; Human: 100%; Mouse: 100%; Rabbit: 100%; Rat: 100%; Zebrafish: 100%
Formulation:	Liquid. Purified antibody supplied in 1x PBS buffer with 0.09% (w/v) sodium azide and 2% sucrose. <i>Note that this product is shipped as lyophilized powder to China customers.</i>
Concentration:	lot specific
Purification:	Affinity Purified
Conjugation:	Unconjugated
Storage:	For short term use, store at 2-8°C up to 1 week. For long term storage, store at -20°C in small aliquots to prevent freeze-thaw cycles.
Stability:	Shelf life: one year from despatch.
Predicted Protein Size:	15kDa
Gene Name:	phosphoprotein enriched in astrocytes 15
Database Link:	<a href="#">NP_003759</a> <a href="#">Entrez Gene 8682 Human</a> <a href="#">Q5U318</a>
Background:	PEA15 is a death effector domain (DED)-containing protein predominantly expressed in the central nervous system, particularly in astrocytes.
Synonyms:	HMAT1; HUMMAT1H; MAT1; MAT1H; PEA-15; PED
Protein Families:	Druggable Genome

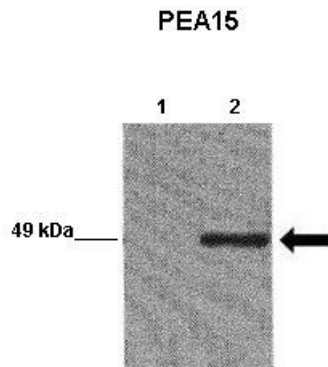


[View online »](#)

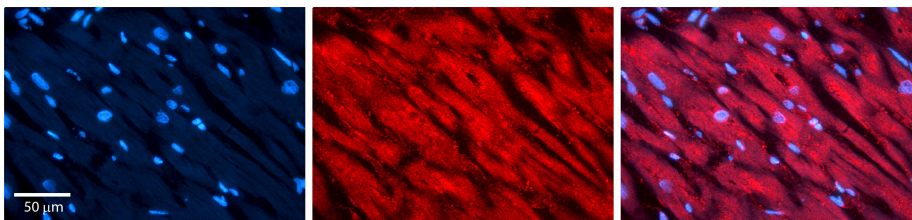
Product images:



WB Suggested Anti-PEA15 Antibody Titration: 0.2-1 ug/ml  
 ELISA Titer: 1:1562500  
 Positive Control: Human brain



WB Suggested Anti-PEA15 Antibody  
 Positive Control: Lane 1: 20ug EGFP-transfected MCF7 lysate Lane 2: 20ug EGFP-PEA15 transfected MCF7 lysate  
 Primary Antibody Dilution : 1:1000  
 Secondary Antibody : Goat anti-rabbit-HRP  
 Secondary Antibody Dilution : 1:5000  
 Submitted by: Yann Wallez (Sanford-Burnham Medical Research Institute)



Rabbit Anti-PEA15 Antibody  
 Catalog Number: TA357483  
 Formalin Fixed Paraffin Embedded Tissue:  
 Human heart Tissue  
 Observed Staining: Cytoplasmic  
 Primary Antibody Concentration: 1:100  
 Other Working Concentrations: N/A  
 Secondary Antibody: Donkey anti-Rabbit-Cy3  
 Secondary Antibody Concentration: 1:200  
 Magnification: 20X  
 Exposure Time: 0.5-2.0 sec