

Product datasheet for **TA357482**

Map1lc3a Rabbit Polyclonal Antibody

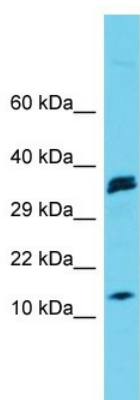
Product data:

Product Type:	Primary Antibodies
Applications:	WB
Reactivity:	Rat
Host:	Rabbit
Clonality:	Polyclonal
Immunogen:	The immunogen is a synthetic peptide directed towards the N-terminal region of Rat Map1lc3a
Specificity:	Expected reactivity: Cow, Dog, Guinea Pig, Horse, Human, Mouse, Rabbit, Rat, Zebrafish Homology: Cow: 100%; Dog: 100%; Guinea Pig: 100%; Horse: 100%; Human: 100%; Mouse: 100%; Rabbit: 100%; Rat: 100%; Zebrafish: 100%
Formulation:	Liquid. Purified antibody supplied in 1x PBS buffer with 0.09% (w/v) sodium azide and 2% sucrose. <i>Note that this product is shipped as lyophilized powder to China customers.</i>
Concentration:	lot specific
Purification:	Affinity Purified
Conjugation:	Unconjugated
Storage:	For short term use, store at 2-8°C up to 1 week. For long term storage, store at -20°C in small aliquots to prevent freeze-thaw cycles.
Stability:	Shelf life: one year from despatch.
Predicted Protein Size:	13kDa
Gene Name:	microtubule-associated protein 1 light chain 3 alpha
Database Link:	NP_955794 Entrez Gene 362245 Rat Q6XVN8
Background:	Map1lc3a is a light chain subunit of MAP1A and MAP1B microtubule-associated proteins; It mediates interactions between microtubules and the cytoskeleton.
Synonyms:	LC3; LC3A; MAP1ALC3; MAP1BLC3; OTTHUMP00000030698



[View online »](#)

Product images:



Host: Rabbit
Target Name: Map1lc3a
Sample Type: Rat Pancreas lysates
Antibody Dilution: 1.0ug/ml