

Product datasheet for TA357481

GNAI3 Rabbit Polyclonal Antibody

Product data:

Product Type:	Primary Antibodies
Applications:	WB
Reactivity:	Human, Mouse
Host:	Rabbit
Clonality:	Polyclonal
Immunogen:	The immunogen is a synthetic peptide directed towards the middle region of human GNAI3
Specificity:	Expected reactivity: Cow, Dog, Goat, Guinea Pig, Horse, Human, Mouse, Rabbit, Rat, Sheep, Zebrafish Homology: Cow: 100%; Dog: 100%; Goat: 100%; Guinea Pig: 100%; Horse: 100%; Human: 100%; Mouse: 100%; Rabbit: 100%; Rat: 100%; Sheep: 100%; Zebrafish: 100%
Formulation:	Liquid. Purified antibody supplied in 1x PBS buffer with 0.09% (w/v) sodium azide and 2% sucrose. <i>Note that this product is shipped as lyophilized powder to China customers.</i>
Concentration:	lot specific
Purification:	Affinity Purified
Conjugation:	Unconjugated
Storage:	For short term use, store at 2-8°C up to 1 week. For long term storage, store at -20°C in small aliquots to prevent freeze-thaw cycles.
Stability:	Shelf life: one year from despatch.
Predicted Protein Size:	39kDa
Gene Name:	G protein subunit alpha i3
Database Link:	NP_006487 Entrez Gene 14679 Mouse Entrez Gene 2773 Human P08754
Background:	GNAI3 is a guanine nucleotide-binding proteins (G proteins) are involved as modulators or transducers in various transmembrane signaling systems. G(k) is the stimulatory G protein of receptor-regulated K ⁺ channels.
Synonyms:	87U6; FLJ26559

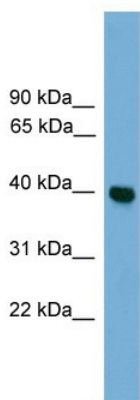


[View online »](#)

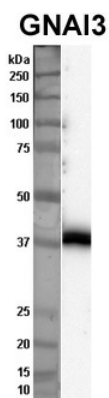
Protein Families: Druggable Genome

Protein Pathways: Axon guidance, Chemokine signaling pathway, Gap junction, Leukocyte transendothelial migration, Long-term depression, Melanogenesis, Progesterone-mediated oocyte maturation, Tight junction

Product images:

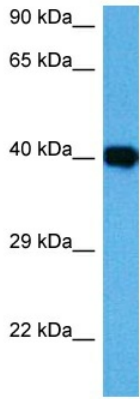


WB Suggested Anti-GNAI3 Antibody Titration: 0.2-1 ug/ml
 ELISA Titer: 1:312500
 Positive Control: HepG2 cell lysate



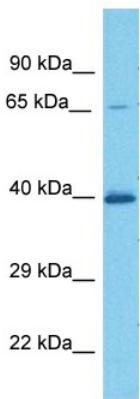
Sample Type: Nthy-ori cell lysate (50ug)
Primary Dilution: 1:1000
Secondary Antibody: anti-rabbit HRP
Secondary Dilution: 1:2000
Image Submitted By: Anonymous

See Immunoblot 2 Data and Customer Feedback tab for more information.



Host: Rabbit
Target Name: Gnai2
Sample Type: Mouse Heart Lysate
Antibody Dilution: 1.0µg/ml

Host: Mouse
Target Name: GNAI2
Sample Tissue: Mouse Heart
Antibody Dilution: 1ug/ml



Host: Rabbit
Target Name: GNAI3
Sample Type: A549 Cell Lysate
Antibody Dilution: 1.0µg/ml

Host: Rabbit
Target Name: GNAI3
Sample Tissue: Human A549 Whole Cell
Antibody Dilution: 1ug/ml