

Product datasheet for TA357480

GNAI3 Rabbit Polyclonal Antibody

Product data:

Product Type:	Primary Antibodies
Applications:	WB
Reactivity:	Human
Host:	Rabbit
Clonality:	Polyclonal
Immunogen:	The immunogen is a synthetic peptide directed towards the N terminal region of human GNAI3
Specificity:	Expected reactivity: Cow, Dog, Goat, Guinea Pig, Horse, Human, Mouse, Rabbit, Rat, Sheep, Zebrafish Homology: Cow: 93%; Dog: 93%; Goat: 85%; Guinea Pig: 93%; Horse: 93%; Human: 100%; Mouse: 100%; Rabbit: 93%; Rat: 100%; Sheep: 93%; Zebrafish: 100%
Formulation:	Liquid. Purified antibody supplied in 1x PBS buffer with 0.09% (w/v) sodium azide and 2% sucrose.
Concentration:	lot specific
Purification:	Affinity Purified
Conjugation:	Unconjugated
Storage:	For short term use, store at 2-8°C up to 1 week. For long term storage, store at -20°C in small aliquots to prevent freeze-thaw cycles.
Stability:	Shelf life: one year from despatch.
Predicted Protein Size:	39kDa
Gene Name:	G protein subunit alpha i3
Database Link:	NP_006487 Entrez Gene 2773 Human P08754
Background:	GNAI3 is a guanine nucleotide-binding proteins (G proteins) are involved as modulators or transducers in various transmembrane signaling systems. G(k) is the stimulatory G protein of receptor-regulated K ⁺ channels.
Synonyms:	87U6; FLJ26559

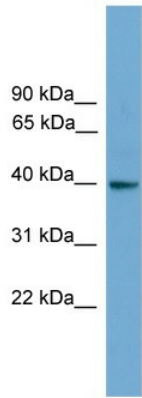


[View online »](#)

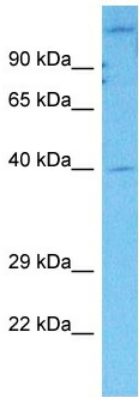
Protein Families: Druggable Genome

Protein Pathways: Axon guidance, Chemokine signaling pathway, Gap junction, Leukocyte transendothelial migration, Long-term depression, Melanogenesis, Progesterone-mediated oocyte maturation, Tight junction

Product images:



WB Suggested Anti-GNAI3 Antibody Titration: 0.2-1 ug/ml
 ELISA Titer: 1:62500
 Positive Control: Human brain



Host: Rabbit
 Target Name: GNAI3
 Sample Type: HT1080 Cell Lysate
 Antibody Dilution: 1.0ug/ml

Host: Rabbit
 Target Name: GNAI3
 Sample Tissue: Human HT1080 Whole Cell
 Antibody Dilution: 1 ug/ml