

Product datasheet for **TA357479**

GABARAPL1 Rabbit Polyclonal Antibody

Product data:

Product Type:	Primary Antibodies
Applications:	WB
Reactivity:	Human
Host:	Rabbit
Clonality:	Polyclonal
Immunogen:	The immunogen is a synthetic peptide directed towards the middle region of Human GABARAPL1
Specificity:	Expected reactivity: Cow, Dog, Guinea Pig, Horse, Human, Mouse, Pig, Rabbit, Rat, Zebrafish Homology: Cow: 100%; Dog: 100%; Guinea Pig: 79%; Horse: 79%; Human: 100%; Mouse: 100%; Pig: 100%; Rabbit: 100%; Rat: 100%; Zebrafish: 100%
Formulation:	Liquid. Purified antibody supplied in 1x PBS buffer with 0.09% (w/v) sodium azide and 2% sucrose. <i>Note that this product is shipped as lyophilized powder to China customers.</i>
Concentration:	lot specific
Purification:	Affinity Purified
Conjugation:	Unconjugated
Storage:	For short term use, store at 2-8°C up to 1 week. For long term storage, store at -20°C in small aliquots to prevent freeze-thaw cycles.
Stability:	Shelf life: one year from despatch.
Predicted Protein Size:	16kDa
Gene Name:	GABA type A receptor associated protein like 1
Database Link:	Entrez Gene 23710 Human Q9HOR8-2
Background:	GABARAPL1 is a Ubiquitin-like modifier that increases cell-surface expression of kappa-type opioid receptor through facilitating anterograde intracellular trafficking of the receptor. it is involved in formation of autophagosomal vacuoles. Whereas LC3s are involved in elongation of the phagophore membrane, the GABARAP/GATE-16 subfamily is essential for a later stage in autophagosome maturation.



[View online »](#)

Synonyms: APG8-LIKE; APG8L; ATG8; ATG8L; GEC-1; GEC1

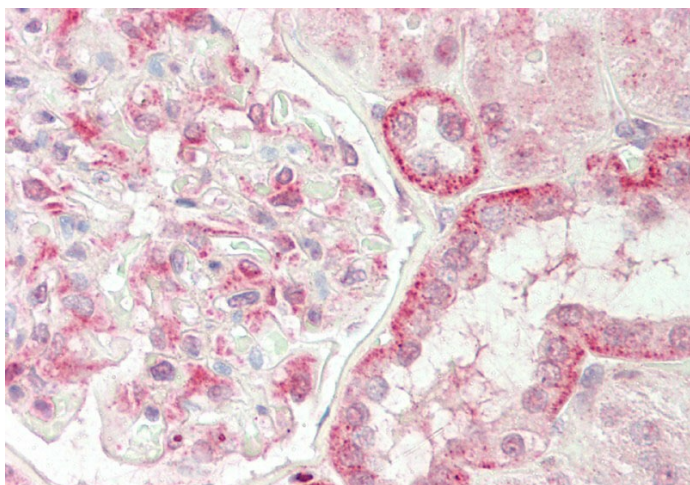
Product images:

Host: Rabbit
Target Name: GABARAPL1
Sample Type: Fetal Brain lysates
Antibody Dilution: 1.0ug/ml

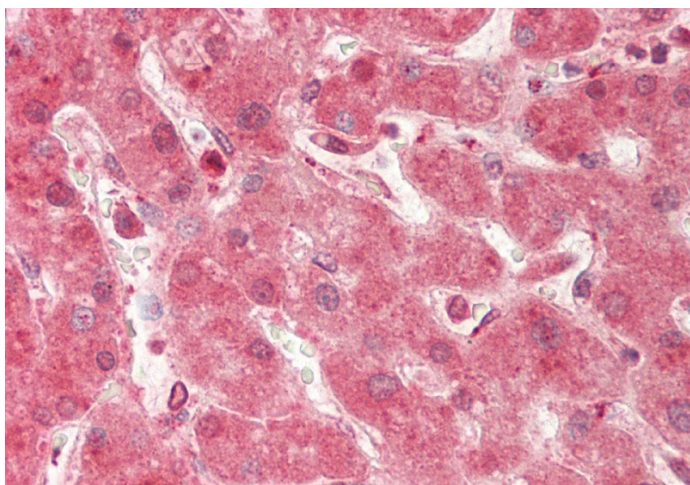


Host: Rabbit
Target Name: GABARAP
Sample Type: RPMI-8226 Cell Lysate
Antibody Dilution: 1.0ug/ml

Host: Rabbit
Target Name: GABARAP
Sample Tissue: Human RPMI 8226 Whole Cell
Antibody Dilution: 1ug/ml



Rabbit Anti-GABARAPL1 antibody
Catalog Number: ARP58901
Formalin Fixed Paraffin Embedded Tissue:
Human Kidney
Primary antibody Concentration: 1:100
Secondary Antibody: Donkey anti-Rabbit-Cy3
Secondary Antibody Concentration: 1:200
Magnification: 20x
Exposure Time: 0.5-2.0sec



Rabbit Anti-GABARAPL1 antibody
Catalog Number: ARP58901
Formalin Fixed Paraffin Embedded Tissue:
Human Liver
Primary antibody Concentration: 1:100
Secondary Antibody: Donkey anti-Rabbit-Cy3
Secondary Antibody Concentration: 1:200
Magnification: 20x
Exposure Time: 0.5-2.0sec