

Product datasheet for **TA357477**

Eif4e Rabbit Polyclonal Antibody

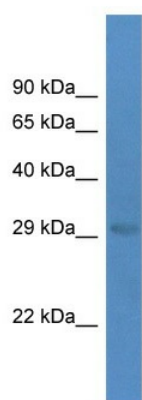
Product data:

Product Type:	Primary Antibodies
Applications:	WB
Reactivity:	Rat
Host:	Rabbit
Clonality:	Polyclonal
Specificity:	Expected reactivity: Cow, Dog, Guinea Pig, Horse, Human, Mouse, Rabbit, Rat, Zebrafish Homology: Cow: 100%; Dog: 100%; Guinea Pig: 100%; Horse: 100%; Human: 100%; Mouse: 100%; Rabbit: 100%; Rat: 100%; Zebrafish: 100%
Formulation:	Liquid. Purified antibody supplied in 1x PBS buffer with 0.09% (w/v) sodium azide and 2% sucrose. <i>Note that this product is shipped as lyophilized powder to China customers.</i>
Concentration:	lot specific
Purification:	Affinity Purified
Conjugation:	Unconjugated
Storage:	For short term use, store at 2-8°C up to 1 week. For long term storage, store at -20°C in small aliquots to prevent freeze-thaw cycles.
Stability:	Shelf life: one year from despatch.
Predicted Protein Size:	25kDa
Gene Name:	eukaryotic translation initiation factor 4E
Database Link:	NP_446426 Entrez Gene 117045 Rat P63074
Background:	Eif4e binds to the mRNA 7-methylguanosine cap and mediates mRNA binding to the 40S ribosome in the rate limiting step in translational initiation.
Synonyms:	CBP; eIF-4E; EIF4E1; EIF4EL1; EIF4F; MGC111573



[View online »](#)

Product images:



WB Suggested Anti-Eif4e Antibody
Titration: 1.0 ug/ml
Positive Control: Rat Liver