

Product datasheet for **TA357475**

Sh3glb1 Rabbit Polyclonal Antibody

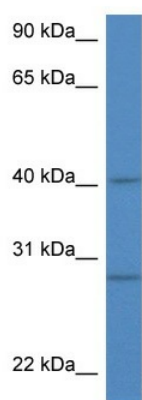
Product data:

Product Type:	Primary Antibodies
Applications:	WB
Reactivity:	Mouse
Host:	Rabbit
Clonality:	Polyclonal
Specificity:	Expected reactivity: Cow, Dog, Guinea Pig, Horse, Human, Mouse, Rabbit, Rat, Zebrafish Homology: Cow: 100%; Dog: 100%; Guinea Pig: 100%; Horse: 100%; Human: 100%; Mouse: 100%; Rabbit: 100%; Rat: 100%; Zebrafish: 100%
Formulation:	Liquid. Purified antibody supplied in 1x PBS buffer with 0.09% (w/v) sodium azide and 2% sucrose. <i>Note that this product is shipped as lyophilized powder to China customers.</i>
Concentration:	lot specific
Purification:	Affinity Purified
Conjugation:	Unconjugated
Storage:	For short term use, store at 2-8°C up to 1 week. For long term storage, store at -20°C in small aliquots to prevent freeze-thaw cycles.
Stability:	Shelf life: one year from despatch.
Predicted Protein Size:	40kDa
Gene Name:	SH3-domain GRB2-like B1 (endophilin)
Database Link:	NP_062337 Entrez Gene 54673 Mouse Q9JK48
Background:	Sh3glb1 may be required for normal outer mitochondrial membrane dynamics. It is required for coatomer-mediated retrograde transport in certain cells. It may recruit other proteins to membranes with high curvature. It may promote membrane fusion.
Synonyms:	Bif-1; CGI-61; dj612B15.2; KIAA0491



[View online »](#)

Product images:



WB Suggested Anti-Sh3glb1 Antibody
Titration: 1.0 ug/ml
Positive Control: Mouse Thymus