

Product datasheet for TA357468

Stella (DPPA3) Rabbit Polyclonal Antibody

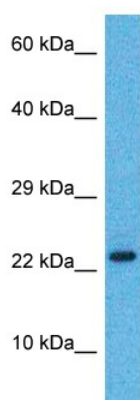
Product data:

Product Type:	Primary Antibodies
Applications:	WB
Reactivity:	Human
Host:	Rabbit
Clonality:	Polyclonal
Immunogen:	The immunogen is a synthetic peptide directed towards the N-terminal region of Human DPPA3
Specificity:	Expected reactivity: Human Homology: Human: 100%
Formulation:	Liquid. Purified antibody supplied in 1x PBS buffer with 0.09% (w/v) sodium azide and 2% sucrose. <i>Note that this product is shipped as lyophilized powder to China customers.</i>
Concentration:	lot specific
Purification:	Affinity Purified
Conjugation:	Unconjugated
Storage:	For short term use, store at 2-8°C up to 1 week. For long term storage, store at -20°C in small aliquots to prevent freeze-thaw cycles.
Stability:	Shelf life: one year from despatch.
Predicted Protein Size:	17kDa
Gene Name:	developmental pluripotency associated 3
Database Link:	NP_954980 Entrez Gene 359787 Human Q6W0C5
Background:	This gene encodes a protein that in mice may function as a maternal factor during the preimplantation stage of development. In mice, this gene may play a role in transcriptional repression, cell division, and maintenance of cell pluripotentiality. In humans, related intronless loci are located on chromosomes 14 and X.
Synonyms:	Stella; STELLAR



[View online »](#)

Product images:



Host: Rabbit
Target Name: DPPA3
Sample Tissue: Breast Tumor Lysate
Antibody Dilution: 1.0 μ g/ml

Host: Rabbit
Target Name: DPPA3
Sample Type: Breast Tumor lysates
Antibody Dilution: 1.0 μ g/ml