

Product datasheet for **TA357466**

Thap11 Rabbit Polyclonal Antibody

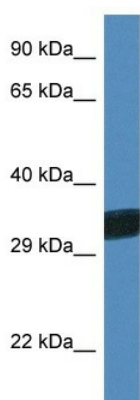
Product data:

Product Type:	Primary Antibodies
Applications:	WB
Reactivity:	Mouse
Host:	Rabbit
Clonality:	Polyclonal
Specificity:	Expected reactivity: Cow, Dog, Guinea Pig, Horse, Human, Mouse, Rabbit, Rat Homology: Cow: 100%; Dog: 100%; Guinea Pig: 100%; Horse: 100%; Human: 100%; Mouse: 100%; Rabbit: 100%; Rat: 100%
Formulation:	Liquid. Purified antibody supplied in 1x PBS buffer with 0.09% (w/v) sodium azide and 2% sucrose. <i>Note that this product is shipped as lyophilized powder to China customers.</i>
Concentration:	lot specific
Purification:	Affinity Purified
Conjugation:	Unconjugated
Storage:	For short term use, store at 2-8°C up to 1 week. For long term storage, store at -20°C in small aliquots to prevent freeze-thaw cycles.
Stability:	Shelf life: one year from despatch.
Predicted Protein Size:	33kDa
Gene Name:	THAP domain containing 11
Database Link:	NP_067488 Entrez Gene 59016 Mouse Q9JJD0
Background:	Thap11 is a transcriptional repressor that plays a central role for embryogenesis and the pluripotency of embryonic stem (ES) cells. It is also a sequence-specific DNA-binding factor that represses gene expression in pluripotent ES cells by directly binding to key genetic loci and recruiting epigenetic modifiers.
Synonyms:	CTG-B43a; CTG-B45d; HRIHFB2206; RONIN



[View online »](#)

Product images:



WB Suggested Anti-Thap11 Antibody
Titration: 1.0 ug/ml
Positive Control: Mouse Pancreas