

## Product datasheet for **TA357462**

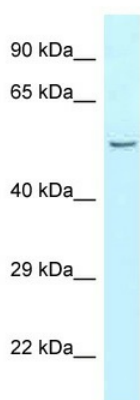
### Cpa5 Rabbit Polyclonal Antibody

#### Product data:

Product Type:	Primary Antibodies
Applications:	WB
Reactivity:	Rat
Host:	Rabbit
Clonality:	Polyclonal
Specificity:	<b>Expected reactivity:</b> Cow, Dog, Guinea Pig, Horse, Human, Mouse, Rat <b>Homology:</b> Cow: 86%; Dog: 93%; Guinea Pig: 93%; Horse: 86%; Human: 100%; Mouse: 93%; Rat: 93%
Formulation:	Liquid. Purified antibody supplied in 1x PBS buffer with 0.09% (w/v) sodium azide and 2% sucrose.
Concentration:	lot specific
Purification:	Affinity Purified
Conjugation:	Unconjugated
Storage:	For short term use, store at 2-8°C up to 1 week. For long term storage, store at -20°C in small aliquots to prevent freeze-thaw cycles.
Stability:	Shelf life: one year from despatch.
Predicted Protein Size:	47kDa
Gene Name:	carboxypeptidase A5
Database Link:	<a href="#">NP_001186050</a> <a href="#">Entrez Gene 79897 Human</a> <a href="#">Entrez Gene 408212 Rat</a> <a href="#">Q9H633</a>
Background:	Cpa5 may have carboxypeptidase activity.
Synonyms:	FLJ35969



[View online »](#)

**Product images:**

WB Suggested Anti-Cpa5 Antibody  
Titration: 1.0 ug/ml  
Positive Control: Rat Muscle