

Product datasheet for **TA357458**

SERHL2 Rabbit Polyclonal Antibody

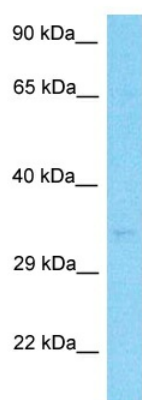
Product data:

Product Type:	Primary Antibodies
Applications:	WB
Reactivity:	Human
Host:	Rabbit
Clonality:	Polyclonal
Immunogen:	The immunogen is a synthetic peptide directed towards the C-terminal region of Human SEHL2
Specificity:	Expected reactivity: Human, Mouse, Rabbit, Rat Homology: Human: 100%; Mouse: 79%; Rabbit: 79%; Rat: 93%
Formulation:	Liquid. Purified antibody supplied in 1x PBS buffer with 0.09% (w/v) sodium azide and 2% sucrose.
Concentration:	lot specific
Purification:	Affinity purified
Conjugation:	Unconjugated
Storage:	For short term use, store at 2-8°C up to 1 week. For long term storage, store at -20°C in small aliquots to prevent freeze-thaw cycles.
Stability:	Shelf life: one year from despatch.
Predicted Protein Size:	34kDa
Gene Name:	serine hydrolase-like 2
Database Link:	NP_055324 Entrez Gene 253190 Human Q9H4I8
Synonyms:	dj222E13.1; kraken-like; MGC149508; MGC157667; MGC157668; SERHL



[View online »](#)

Product images:



Host: Rabbit
Target Name: SEHL2
Sample Tissue: Stomach Tumor Lysate
Antibody Dilution: 1.0µg/ml

Host: Rabbit
Target Name: SEHL2
Sample Type: Stomach Tumor lysates
Antibody Dilution: 1.0ug/ml