

Product datasheet for **TA357453**

Ofd1 Rabbit Polyclonal Antibody

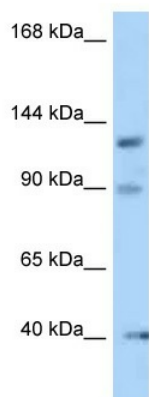
Product data:

Product Type:	Primary Antibodies
Applications:	WB
Reactivity:	Rat
Host:	Rabbit
Clonality:	Polyclonal
Specificity:	Expected reactivity: Cow, Dog, Guinea Pig, Horse, Human, Mouse, Rat, Zebrafish Homology: Cow: 93%; Dog: 100%; Guinea Pig: 100%; Horse: 100%; Human: 100%; Mouse: 100%; Rat: 100%; Zebrafish: 79%
Formulation:	Liquid. Purified antibody supplied in 1x PBS buffer with 0.09% (w/v) sodium azide and 2% sucrose.
Concentration:	lot specific
Purification:	Affinity Purified
Conjugation:	Unconjugated
Storage:	For short term use, store at 2-8°C up to 1 week. For long term storage, store at -20°C in small aliquots to prevent freeze-thaw cycles.
Stability:	Shelf life: one year from despatch.
Predicted Protein Size:	112kDa
Gene Name:	oral-facial-digital syndrome 1
Database Link:	NP_001100431 Entrez Gene 302661 Rat D3ZUD5
Background:	The function of this protein remains unknown.
Synonyms:	71-7A; CXorf5; JBTS10; MGC117039; MGC117040; SGBS2



[View online »](#)

Product images:



WB Suggested Anti-Ofd1 Antibody
Titration: 1.0 ug/ml
Positive Control: Rat Liver