

Product datasheet for **TA357448**

GRB2 Rabbit Polyclonal Antibody

Product data:

Product Type:	Primary Antibodies
Applications:	WB
Reactivity:	Human, Mouse
Host:	Rabbit
Clonality:	Polyclonal
Specificity:	Expected reactivity: Cow, Dog, Guinea Pig, Horse, Human, Mouse, Rabbit, Rat, Zebrafish Homology: Cow: 100%; Dog: 100%; Guinea Pig: 100%; Horse: 100%; Human: 100%; Mouse: 100%; Rabbit: 100%; Rat: 100%; Zebrafish: 100%
Formulation:	Liquid. Purified antibody supplied in 1x PBS buffer with 0.09% (w/v) sodium azide and 2% sucrose. <i>Note that this product is shipped as lyophilized powder to China customers.</i>
Concentration:	lot specific
Purification:	Affinity Purified
Conjugation:	Unconjugated
Storage:	For short term use, store at 2-8°C up to 1 week. For long term storage, store at -20°C in small aliquots to prevent freeze-thaw cycles.
Stability:	Shelf life: one year from despatch.
Predicted Protein Size:	24kDa
Gene Name:	growth factor receptor bound protein 2
Database Link:	NP_002077 Entrez Gene 14784 Mouse Entrez Gene 2885 Human P62993
Background:	The protein encoded by this gene binds the epidermal growth factor receptor and contains one SH2 domain and two SH3 domains. Its two SH3 domains direct complex formation with proline-rich regions of other proteins, and its SH2 domain binds tyrosine phosphorylated sequences. This gene is similar to the Sem5 gene of C.elegans, which is involved in the signal transduction pathway. Two alternatively spliced transcript variants encoding different isoforms have been found for this gene.



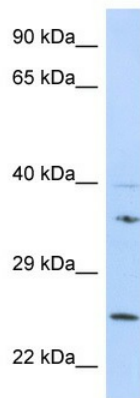
[View online »](#)

Synonyms: AA408164; Ash; MGC108668

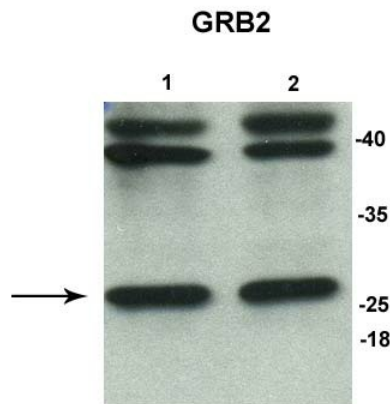
Protein Families: Druggable Genome

Protein Pathways: Acute myeloid leukemia, B cell receptor signaling pathway, Chemokine signaling pathway, Chronic myeloid leukemia, Colorectal cancer, Dorso-ventral axis formation, Endometrial cancer, ErbB signaling pathway, Fc epsilon RI signaling pathway, Focal adhesion, Gap junction, Glioma, GnRH signaling pathway, Insulin signaling pathway, Jak-STAT signaling pathway, MAPK signaling pathway, Natural killer cell mediated cytotoxicity, Neurotrophin signaling pathway, Non-small cell lung cancer, Pathways in cancer, Prostate cancer, Renal cell carcinoma, T cell receptor signaling pathway

Product images:

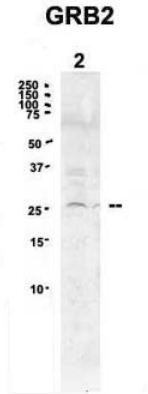


GRB2 antibody - N-terminal region (TA357448) validated by WB using 721_B cell Lysate at 1ug/ml. GRB2 is supported by BioGPS gene expression data to be expressed in 721_B



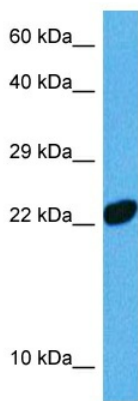
GRB2 antibody - N-terminal region (TA357448) validated by WB using 1. and 2. Human Cystic Fibrosis Bronchial Epithelial Cells (35ug) Primary Dilution: 1:500 Secondary Antibody: goat anti-rabbit-HRP Secondary Dilution: 1:5000 Image Submitted By: Dr. Haouaria Balghi McGill University

See Immunoblot 3 Data and Customer Feedback tab for more information.



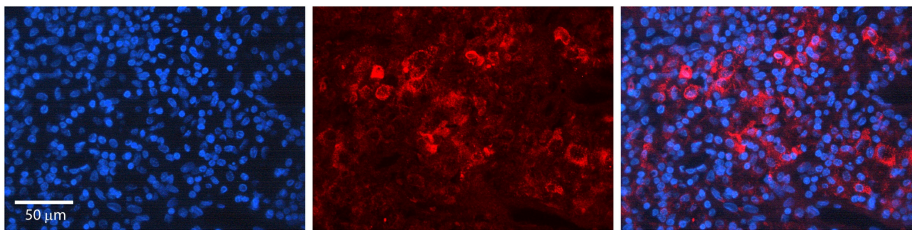
See Immunoblot 2 Data for more information.

Sample Type: 2. mouse brain extracts (80ug)
Primary Antibody Dilution: 2ug/ml
Secondary Antibody: IRDye 800CW goat anti-rabbit from Li-COR Bioscience
Secondary Antibody Dilution: 1: 20,000
Image Submitted by: Yuzhi Chen
 University of Arkansas for Medical Science



Host: Rabbit
 Target Name: Grb2
 Sample Type: Mouse Kidney Lysate
 Antibody Dilution: 1.0µg/ml

Host: Mouse
 Target Name: GRB2
 Sample Tissue: Mouse Kidney
 Antibody Dilution: 1ug/ml



Rabbit Anti-GRB2 Antibody
 Catalog Number: TA357448
 Formalin Fixed Paraffin Embedded Tissue:
 Human Lymph Node Tissue
 Observed Staining: Cytoplasm
 Primary Antibody Concentration: 1:100
 Other Working Concentrations: N/A
 Secondary Antibody: Donkey anti-Rabbit-Cy3
 Secondary Antibody Concentration: 1:200
 Magnification: 20X
 Exposure Time: 0.5–2.0 sec