

Product datasheet for TA357447

CST11 Rabbit Polyclonal Antibody

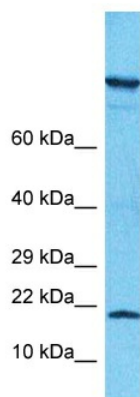
Product data:

Product Type:	Primary Antibodies
Applications:	WB
Reactivity:	Human
Host:	Rabbit
Clonality:	Polyclonal
Immunogen:	The immunogen is a synthetic peptide directed towards the N-terminal region of Human CST11
Specificity:	Expected reactivity: Dog, Horse, Human, Mouse, Pig, Rat Homology: Dog: 80%; Horse: 80%; Human: 100%; Mouse: 80%; Pig: 80%; Rat: 80%
Formulation:	Liquid. Purified antibody supplied in 1x PBS buffer with 0.09% (w/v) sodium azide and 2% sucrose. <i>Note that this product is shipped as lyophilized powder to China customers.</i>
Concentration:	lot specific
Purification:	Affinity purified
Conjugation:	Unconjugated
Storage:	For short term use, store at 2-8°C up to 1 week. For long term storage, store at -20°C in small aliquots to prevent freeze-thaw cycles.
Stability:	Shelf life: one year from despatch.
Predicted Protein Size:	15kDa
Gene Name:	cystatin 11
Database Link:	NP_570612 Entrez Gene 140880 Human Q9H112
Background:	CST11 has antibacterial activity against the Gram-negative bacteria E.coli. It may play a role in sperm maturation and fertilization.
Synonyms:	CST8L; dJ322G13.6; SC13; SC13delta



[View online »](#)

Product images:



Host: Rabbit
Target Name: CST11
Sample Tissue: Fetal Kidney Lysate
Antibody Dilution: 1.0µg/ml

Host: Rabbit
Target Name: CST11
Sample Type: Fetal Kidney lysates
Antibody Dilution: 1.0ug/ml