

Product datasheet for **TA357441**

Igf2bp1 Rabbit Polyclonal Antibody

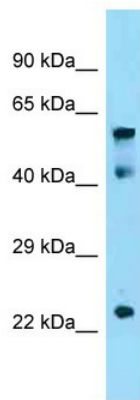
Product data:

Product Type:	Primary Antibodies
Applications:	WB
Reactivity:	Rat, Mouse
Host:	Rabbit
Clonality:	Polyclonal
Specificity:	Expected reactivity: Cow, Dog, Guinea Pig, Horse, Human, Mouse, Rabbit, Rat, Sheep, Zebrafish Homology: Cow: 100%; Dog: 100%; Guinea Pig: 100%; Horse: 100%; Human: 100%; Mouse: 100%; Rabbit: 100%; Rat: 100%; Sheep: 100%; Zebrafish: 79%
Formulation:	Liquid. Purified antibody supplied in 1x PBS buffer with 0.09% (w/v) sodium azide and 2% sucrose. <i>Note that this product is shipped as lyophilized powder to China customers.</i>
Concentration:	lot specific
Purification:	Affinity Purified
Conjugation:	Unconjugated
Storage:	For short term use, store at 2-8°C up to 1 week. For long term storage, store at -20°C in small aliquots to prevent freeze-thaw cycles.
Stability:	Shelf life: one year from despatch.
Predicted Protein Size:	63kDa
Gene Name:	insulin-like growth factor 2 mRNA binding protein 1
Database Link:	NP_034081 Entrez Gene 303477 Rat Entrez Gene 140486 Mouse O88477
Background:	Igf2bp1 is a RNA-binding factor that affects mRNA nuclear export, localization, stability and translation.
Synonyms:	CRD-BP; CRDBP; IMP-1; IMP1; VICKZ1; ZBP-1; ZBP1



[View online »](#)

Product images:



WB Suggested Anti-Igf2bp1 Antibody
Titration: 1.0 ug/ml
Positive Control: Mouse Thymus



Host: Rabbit
Target Name: Igf2bp1
Sample Type: Rat Skeletal Muscle Lysate
Antibody Dilution: 1.0µg/ml

Host: Rat
Target Name: IGF2BP1
Sample Tissue: Rat Skeletal Muscle
Antibody Dilution: 1 ug/ml