

Product datasheet for TA357440

Slc9a7 Rabbit Polyclonal Antibody

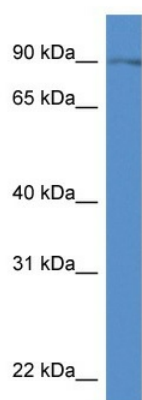
Product data:

Product Type:	Primary Antibodies
Applications:	WB
Reactivity:	Mouse
Host:	Rabbit
Clonality:	Polyclonal
Specificity:	Expected reactivity: Cow, Dog, Guinea Pig, Horse, Human, Mouse, Rabbit, Rat Homology: Cow: 100%; Dog: 93%; Guinea Pig: 93%; Horse: 100%; Human: 100%; Mouse: 93%; Rabbit: 100%; Rat: 93%
Formulation:	Liquid. Purified antibody supplied in 1x PBS buffer with 0.09% (w/v) sodium azide and 2% sucrose. <i>Note that this product is shipped as lyophilized powder to China customers.</i>
Concentration:	lot specific
Purification:	Affinity Purified
Conjugation:	Unconjugated
Storage:	For short term use, store at 2-8°C up to 1 week. For long term storage, store at -20°C in small aliquots to prevent freeze-thaw cycles.
Stability:	Shelf life: one year from despatch.
Predicted Protein Size:	80kDa
Gene Name:	solute carrier family 9 (sodium/hydrogen exchanger), member 7
Database Link:	NP_796327 Entrez Gene 236727 Mouse Q8BLV3
Background:	Slc9a7 mediates electroneutral exchange of protons for Na ⁺ and K ⁺ across endomembranes. It may contribute to Golgi volume and cation homeostasis.
Synonyms:	NHE-7; NHE7; SLC9A6



[View online »](#)

Product images:



WB Suggested Anti-Slc9a7 Antibody
Titration: 1.0 ug/ml
Positive Control: Mouse Spleen