

## Product datasheet for **TA357439**

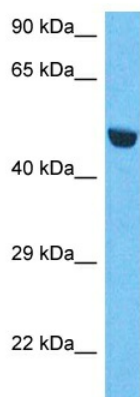
### MFSD3 Rabbit Polyclonal Antibody

#### Product data:

Product Type:	Primary Antibodies
Applications:	WB
Reactivity:	Human
Host:	Rabbit
Clonality:	Polyclonal
Immunogen:	The immunogen is a synthetic peptide directed towards the N-terminal region of Human MFSD3
Specificity:	<b>Expected reactivity:</b> Human, Pig <b>Homology:</b> Human: 100%; Pig: 77%
Formulation:	Liquid. Purified antibody supplied in 1x PBS buffer with 0.09% (w/v) sodium azide and 2% sucrose.
Concentration:	lot specific
Purification:	Affinity purified
Conjugation:	Unconjugated
Storage:	For short term use, store at 2-8°C up to 1 week. For long term storage, store at -20°C in small aliquots to prevent freeze-thaw cycles.
Stability:	Shelf life: one year from despatch.
Predicted Protein Size:	45kDa
Gene Name:	major facilitator superfamily domain containing 3
Database Link:	<a href="#">NP_612440</a> <a href="#">Entrez Gene 113655 Human</a> <a href="#">Q96ES6</a>
Background:	The function of this protein remains unknown.
Synonyms:	MFSD3



[View online »](#)

**Product images:**


Host: Rabbit  
 Target Name: MFSD3  
 Sample Tissue: HepG2 Cell Lysate  
 Antibody Dilution: 1.0µg/ml

Host: Rabbit  
 Target Name: MFSD3  
 Sample Type: HepG2 Whole Cell lysates  
 Antibody Dilution: 1.0ug/ml