

Product datasheet for **TA357434**

NPM2 Rabbit Polyclonal Antibody

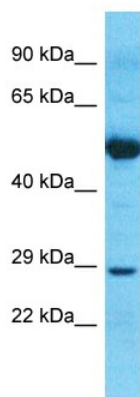
Product data:

Product Type:	Primary Antibodies
Applications:	WB
Reactivity:	Human
Host:	Rabbit
Clonality:	Polyclonal
Immunogen:	The immunogen is a synthetic peptide directed towards the N-terminal region of Human NPM2
Specificity:	Expected reactivity: Human Homology: Human: 100%
Formulation:	Liquid. Purified antibody supplied in 1x PBS buffer with 0.09% (w/v) sodium azide and 2% sucrose.
Concentration:	lot specific
Purification:	Affinity Purified
Conjugation:	Unconjugated
Storage:	For short term use, store at 2-8°C up to 1 week. For long term storage, store at -20°C in small aliquots to prevent freeze-thaw cycles.
Stability:	Shelf life: one year from despatch.
Predicted Protein Size:	23kDa
Gene Name:	nucleophosmin/nucleoplasmin 2
Database Link:	XP_005273429 Entrez Gene 10361 Human Q86SE8
Background:	NPM2 is a core histones chaperone involved in chromatin reprogramming, specially during fertilization and early embryonic development. It probably involved in sperm DNA decondensation during fertilization.
Synonyms:	MGC78655; OTTHUMP00000161773



[View online »](#)

Product images:



Host: Rabbit
Target Name: NPM2
Sample Tissue: Thymus Tumor Lysate
Antibody Dilution: 1.0 μ g/ml

Host: Rabbit
Target Name: NPM2
Sample Type: Thymus Tumor lysates
Antibody Dilution: 1.0ug/ml