

Product datasheet for **TA357427**

NRL Rabbit Polyclonal Antibody

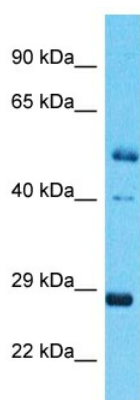
Product data:

Product Type:	Primary Antibodies
Applications:	WB
Reactivity:	Human
Host:	Rabbit
Clonality:	Polyclonal
Immunogen:	The immunogen is a synthetic peptide directed towards the C-terminal region of Human NRL
Specificity:	Expected reactivity: Dog, Guinea Pig, Horse, Human, Rabbit, Rat Homology: Dog: 92%; Guinea Pig: 100%; Horse: 100%; Human: 100%; Rabbit: 100%; Rat: 100%
Formulation:	Liquid. Purified antibody supplied in 1x PBS buffer with 0.09% (w/v) sodium azide and 2% sucrose.
Concentration:	lot specific
Purification:	Affinity Purified
Conjugation:	Unconjugated
Storage:	For short term use, store at 2-8°C up to 1 week. For long term storage, store at -20°C in small aliquots to prevent freeze-thaw cycles.
Stability:	Shelf life: one year from despatch.
Predicted Protein Size:	26kDa
Gene Name:	neural retina leucine zipper
Database Link:	XP_005267767 Entrez Gene 4901 Human P54845
Background:	This gene encodes a basic motif-leucine zipper transcription factor of the Maf subfamily. The encoded protein is conserved among vertebrates and is a critical intrinsic regulator of photoreceptor development and function. Mutations in this gene have been associated with retinitis pigmentosa and retinal degenerative diseases.
Synonyms:	D14S46E; NRL-MAF; OTTHUMP00000027969; OTTHUMP00000164707; RP27



[View online »](#)

Product images:



Host: Rabbit
Target Name: NRL
Sample Tissue: Esophagus Tumor Lysate
Antibody Dilution: 1.0 μ g/ml

Host: Rabbit
Target Name: NRL
Sample Type: Esophagus Tumor lysates
Antibody Dilution: 1.0ug/ml