

## Product datasheet for **TA357424**

### USF2 Rabbit Polyclonal Antibody

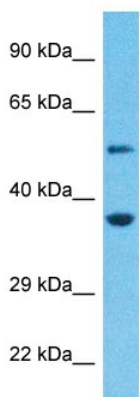
#### Product data:

Product Type:	Primary Antibodies
Applications:	WB
Reactivity:	Human, Rat
Host:	Rabbit
Clonality:	Polyclonal
Immunogen:	The immunogen is a synthetic peptide directed towards the N-terminal region of Human USF2
Specificity:	<b>Expected reactivity:</b> Cow, Guinea Pig, Human, Mouse, Rabbit, Rat <b>Homology:</b> Cow: 100%; Guinea Pig: 100%; Human: 100%; Mouse: 100%; Rabbit: 100%; Rat: 100%
Formulation:	Liquid. Purified antibody supplied in 1x PBS buffer with 0.09% (w/v) sodium azide and 2% sucrose. <i>Note that this product is shipped as lyophilized powder to China customers.</i>
Concentration:	lot specific
Purification:	Affinity Purified
Conjugation:	Unconjugated
Storage:	For short term use, store at 2-8°C up to 1 week. For long term storage, store at -20°C in small aliquots to prevent freeze-thaw cycles.
Stability:	Shelf life: one year from despatch.
Predicted Protein Size:	38kDa
Gene Name:	upstream transcription factor 2, c-fos interacting
Database Link:	<a href="#">Entrez Gene 7392 Human Q15853</a>
Background:	This gene encodes a member of the basic helix-loop-helix leucine zipper family, and can function as a cellular transcription factor. The encoded protein can activate transcription through pyrimidine-rich initiator (Inr) elements and E-box motifs. Two transcript variants encoding distinct isoforms have been identified for this gene.
Synonyms:	bHLHb12; FIP



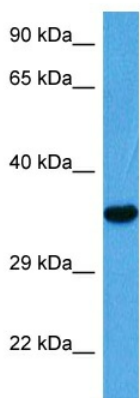
[View online »](#)

Product images:



Host: Rabbit  
 Target Name: USF2  
 Sample Tissue: Jurkat Cell Lysate  
 Antibody Dilution: 1.0µg/ml

Host: Rabbit  
 Target Name: USF2  
 Sample Type: Jurkat Whole Cell lysates  
 Antibody Dilution: 1.0ug/ml



Host: Rabbit  
 Target Name: Usf2  
 Sample Type: Rat Liver Lysate  
 Antibody Dilution: 1.0µg/ml

Host: Rat  
 Target Name: USF2  
 Sample Tissue: Rat Liver  
 Antibody Dilution: 1ug/ml