

Product datasheet for **TA357420**

SETD4 Rabbit Polyclonal Antibody

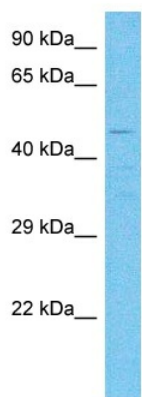
Product data:

Product Type:	Primary Antibodies
Applications:	WB
Reactivity:	Human
Host:	Rabbit
Clonality:	Polyclonal
Immunogen:	The immunogen is a synthetic peptide directed towards the C-terminal region of Human SETD4
Specificity:	Expected reactivity: Human Homology: Human: 100%
Formulation:	Liquid. Purified antibody supplied in 1x PBS buffer with 0.09% (w/v) sodium azide and 2% sucrose.
Concentration:	lot specific
Purification:	Affinity purified
Conjugation:	Unconjugated
Storage:	For short term use, store at 2-8°C up to 1 week. For long term storage, store at -20°C in small aliquots to prevent freeze-thaw cycles.
Stability:	Shelf life: one year from despatch.
Predicted Protein Size:	48kDa
Gene Name:	SET domain containing 4
Database Link:	XP_006724084 Entrez Gene 54093 Human Q9NVD3
Background:	The function of this protein remains unknown.
Synonyms:	C21orf18; C21orf27; OTTHUMP00000108890; OTTHUMP00000108895



[View online »](#)

Product images:



Host: Rabbit
Target Name: SETD4
Sample Tissue: Fetal Kidney Lysate
Antibody Dilution: 1.0µg/ml

Host: Rabbit
Target Name: SETD4
Sample Type: Fetal Kidney lysates
Antibody Dilution: 1.0ug/ml