

## Product datasheet for **TA357418**

### HLX1 (HLX) Rabbit Polyclonal Antibody

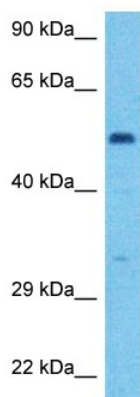
#### Product data:

Product Type:	Primary Antibodies
Applications:	WB
Reactivity:	Human
Host:	Rabbit
Clonality:	Polyclonal
Immunogen:	The immunogen is a synthetic peptide directed towards the C-terminal region of Human HLX
Specificity:	<b>Expected reactivity:</b> Cow, Dog, Guinea Pig, Horse, Human, Mouse, Rabbit, Rat <b>Homology:</b> Cow: 86%; Dog: 86%; Guinea Pig: 79%; Horse: 93%; Human: 100%; Mouse: 86%; Rabbit: 86%; Rat: 93%
Formulation:	Liquid. Purified antibody supplied in 1x PBS buffer with 0.09% (w/v) sodium azide and 2% sucrose. <i>Note that this product is shipped as lyophilized powder to China customers.</i>
Concentration:	lot specific
Purification:	Affinity Purified
Conjugation:	Unconjugated
Storage:	For short term use, store at 2-8°C up to 1 week. For long term storage, store at -20°C in small aliquots to prevent freeze-thaw cycles.
Stability:	Shelf life: one year from despatch.
Predicted Protein Size:	53kDa
Gene Name:	H2.0 like homeobox
Database Link:	<a href="#">NP_068777</a> <a href="#">Entrez Gene 3142 Human</a> <a href="#">Q14774</a>
Background:	HLX is a transcription factor required for TBX21/T-bet-dependent maturation of Th1 cells as well as maintenance of Th1-specific gene expression. It involved in embryogenesis and hematopoiesis.
Synonyms:	HB24; HLX1; homeobox



[View online »](#)

## Product images:



Host: Rabbit  
Target Name: HLX  
Sample Tissue: 721\_B Cell Lysate  
Antibody Dilution: 1.0µg/ml

Host: Rabbit  
Target Name: HLX  
Sample Type: 721\_B Whole Cell lysates  
Antibody Dilution: 1.0ug/ml