

Product datasheet for **TA357409**

CEBP Alpha (CEBPA) Rabbit Polyclonal Antibody

Product data:

Product Type:	Primary Antibodies
Applications:	IHC, WB
Reactivity:	Human
Host:	Rabbit
Clonality:	Polyclonal
Immunogen:	The immunogen is a synthetic peptide directed towards the middle region of human CEBPA
Specificity:	Expected reactivity: Cow, Dog, Guinea Pig, Horse, Human, Mouse, Rabbit, Rat, Sheep, Zebrafish Homology: Cow: 100%; Dog: 100%; Guinea Pig: 100%; Horse: 79%; Human: 100%; Mouse: 100%; Rabbit: 100%; Rat: 100%; Sheep: 79%; Zebrafish: 93%
Formulation:	Liquid. Purified antibody supplied in 1x PBS buffer with 0.09% (w/v) sodium azide and 2% sucrose. <i>Note that this product is shipped as lyophilized powder to China customers.</i>
Concentration:	lot specific
Purification:	Affinity Purified
Conjugation:	Unconjugated
Storage:	For short term use, store at 2-8°C up to 1 week. For long term storage, store at -20°C in small aliquots to prevent freeze-thaw cycles.
Stability:	Shelf life: one year from despatch.
Predicted Protein Size:	37kDa
Gene Name:	CCAAT/enhancer binding protein alpha
Database Link:	NP_004355 Entrez Gene 1050 Human P49715



[View online »](#)

Background:

CEBPA is a bZIP transcription factor which can bind as a homodimer to certain promoters and enhancers. It can form heterodimers with the related proteins CEBP-beta and CEBP-gamma. The protein has been shown to bind to the promoter and modulate the expression of the gene encoding leptin, a protein that plays an important role in body weight homeostasis. Also, CEBPA can interact with CDK2 and CDK4, thereby inhibiting these kinases and causing growth arrest in cultured cells. The protein encoded by this intronless gene is a bZIP transcription factor which can bind as a homodimer to certain promoters and enhancers. It can also form heterodimers with the related proteins CEBP-beta and CEBP-gamma. The encoded protein has been shown to bind to the promoter and modulate the expression of the gene encoding leptin, a protein that plays an important role in body weight homeostasis. Also, the encoded protein can interact with CDK2 and CDK4, thereby inhibiting these kinases and causing growth arrest in cultured cells. Publication Note: This RefSeq record includes a subset of the publications that are available for this gene. Please see the Entrez Gene record to access additional publications. PRIMARYREFSEQ_SPAN PRIMARY_IDENTIFIER PRIMARY_SPAN COMP 1-2385 U34070.1 592-2976

Synonyms:

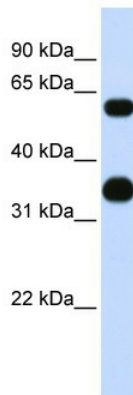
C/EBP-alpha; CEBP

Protein Families:

Druggable Genome, ES Cell Differentiation/IPS

Protein Pathways:

Acute myeloid leukemia, Pathways in cancer

Product images:

WB Suggested Anti-CEBPA Antibody Titration: 0.2-1 ug/ml
ELISA Titer: 1:312500
Positive Control: 721_B cell lysate