

## Product datasheet for **TA357406**

### TRIM26 Rabbit Polyclonal Antibody

#### Product data:

Product Type:	Primary Antibodies
Applications:	WB
Reactivity:	Human
Host:	Rabbit
Clonality:	Polyclonal
Immunogen:	The immunogen is a synthetic peptide directed towards the C-terminal region of Human TRI26
Specificity:	<b>Expected reactivity:</b> Cow, Dog, Horse, Human, Mouse, Pig, Rabbit, Rat, Yeast, Zebrafish <b>Homology:</b> Cow: 100%; Dog: 100%; Horse: 100%; Human: 100%; Mouse: 79%; Pig: 100%; Rabbit: 93%; Rat: 79%; Yeast: 86%; Zebrafish: 86%
Formulation:	Liquid. Purified antibody supplied in 1x PBS buffer with 0.09% (w/v) sodium azide and 2% sucrose. <i>Note that this product is shipped as lyophilized powder to China customers.</i>
Concentration:	lot specific
Purification:	Affinity purified
Conjugation:	Unconjugated
Storage:	For short term use, store at 2-8°C up to 1 week. For long term storage, store at -20°C in small aliquots to prevent freeze-thaw cycles.
Stability:	Shelf life: one year from despatch.
Predicted Protein Size:	59kDa
Gene Name:	tripartite motif containing 26
Database Link:	<a href="#">XP_006725563</a> <a href="#">Entrez Gene 7726 Human</a> <a href="#">Q12899</a>



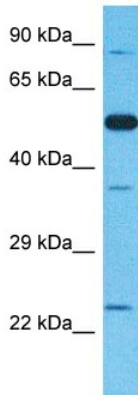
[View online »](#)

**Background:**

The protein encoded by this gene is a member of the tripartite motif (TRIM) family. The TRIM motif includes three zinc-binding domains, a RING, a B-box type 1 and a B-box type 2, and a coiled-coil region. The protein localizes to cytoplasmic bodies. Although the function of the protein is unknown, the RING domain suggests that the protein may have DNA-binding activity. The gene localizes to the major histocompatibility complex (MHC) class I region on chromosome 6. Alternatively spliced transcript variants encoding the same protein have been found for this gene.

**Synonyms:**

AFP; OTTHUMP00000161458; OTTHUMP00000161460; RNF95; ZNF173

**Product images:**

Host: Rabbit  
Target Name: TRI26  
Sample Tissue: Fetal Lung Lysate  
Antibody Dilution: 1.0µg/ml

Host: Rabbit  
Target Name: TRI26  
Sample Type: Fetal Lung lysates  
Antibody Dilution: 1.0ug/ml