

## Product datasheet for **TA357395**

### OPA1 Rabbit Polyclonal Antibody

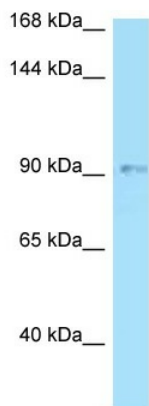
#### Product data:

Product Type:	Primary Antibodies
Applications:	WB
Reactivity:	Human
Host:	Rabbit
Clonality:	Polyclonal
Specificity:	<b>Expected reactivity:</b> Cow, Dog, Guinea Pig, Horse, Human, Mouse, Rabbit, Rat, Zebrafish <b>Homology:</b> Cow: 100%; Dog: 93%; Guinea Pig: 100%; Horse: 100%; Human: 100%; Mouse: 100%; Rabbit: 100%; Rat: 100%; Zebrafish: 79%
Formulation:	Liquid. Purified antibody supplied in 1x PBS buffer with 0.09% (w/v) sodium azide and 2% sucrose. <i>Note that this product is shipped as lyophilized powder to China customers.</i>
Concentration:	lot specific
Purification:	Affinity Purified
Conjugation:	Unconjugated
Storage:	For short term use, store at 2-8°C up to 1 week. For long term storage, store at -20°C in small aliquots to prevent freeze-thaw cycles.
Stability:	Shelf life: one year from despatch.
Predicted Protein Size:	102kDa
Gene Name:	OPA1, mitochondrial dynamin like GTPase
Database Link:	<a href="#">NP_570844</a> <a href="#">Entrez Gene 4976 Human</a> <a href="#">E5KCLK2</a>
Background:	This gene product is a nuclear-encoded mitochondrial protein with similarity to dynamin-related GTPases. It is a component of the mitochondrial network. Mutations in this gene have been associated with optic atrophy type 1, which is a dominantly inherited optic neuropathy resulting in progressive loss of visual acuity, leading in many cases to legal blindness. Multiple transcript variants encoding different isoforms have been found for this gene.
Synonyms:	FLJ12460; KIAA0567; largeG; MGM1; NPG; NTG

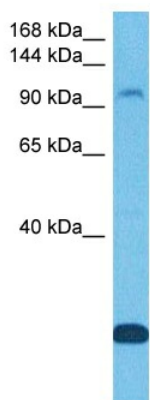


[View online »](#)

Product images:



WB Suggested Anti-OPA1 Antibody  
 Titration: 1.0 ug/ml  
 Positive Control: HT1080 Whole Cell



Host: Rabbit  
 Target Name: OPA1  
 Sample Type: COLO205 Cell Lysate  
 Antibody Dilution: 1.0µg/ml

Host: Rabbit  
 Target Name: OPA1  
 Sample Tissue: Human COLO205 Whole Cell  
 Antibody Dilution: 1ug/ml