

## Product datasheet for **TA357393**

### Myosin (MYL6) Rabbit Polyclonal Antibody

#### Product data:

Product Type:	Primary Antibodies
Applications:	IHC, WB
Reactivity:	Human
Host:	Rabbit
Clonality:	Polyclonal
Immunogen:	The immunogen is a synthetic peptide directed towards the N terminal region of human MYL6
Specificity:	<b>Expected reactivity:</b> Cow, Dog, Guinea Pig, Horse, Human, Mouse, Rabbit, Rat, Sheep, Zebrafish <b>Homology:</b> Cow: 100%; Dog: 90%; Guinea Pig: 100%; Horse: 100%; Human: 100%; Mouse: 100%; Rabbit: 100%; Rat: 100%; Sheep: 100%; Zebrafish: 92%
Formulation:	Liquid. Purified antibody supplied in 1x PBS buffer with 0.09% (w/v) sodium azide and 2% sucrose. <i>Note that this product is shipped as lyophilized powder to China customers.</i>
Concentration:	lot specific
Purification:	Affinity Purified
Conjugation:	Unconjugated
Storage:	For short term use, store at 2-8°C up to 1 week. For long term storage, store at -20°C in small aliquots to prevent freeze-thaw cycles.
Stability:	Shelf life: one year from despatch.
Predicted Protein Size:	17kDa
Gene Name:	myosin light chain 6
Database Link:	<a href="#">NP_524147</a> <a href="#">Entrez Gene 4637 Human</a> <a href="#">P60660</a>



[View online »](#)

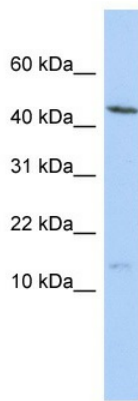
**Background:** MYL6 contains 3 EF-hand domains. It is the regulatory light chain of myosin. MYL6 does not bind calcium. Myosin is a hexameric ATPase cellular motor protein. It is composed of two heavy chains, two nonphosphorylatable alkali light chains, and two phosphorylatable regulatory light chains. This gene encodes a myosin alkali light chain that is expressed in smooth muscle and non-muscle tissues. Genomic sequences representing several pseudogenes have been described and two transcript variants encoding different isoforms have been identified for this gene.

**Synonyms:** ESMLC; LC17; LC17-GI; LC17-NM; LC17A; LC17B; MLC-3; MLC1SM; MLC3NM; MLC3SM

**Protein Families:** Druggable Genome

**Protein Pathways:** Vascular smooth muscle contraction

**Product images:**



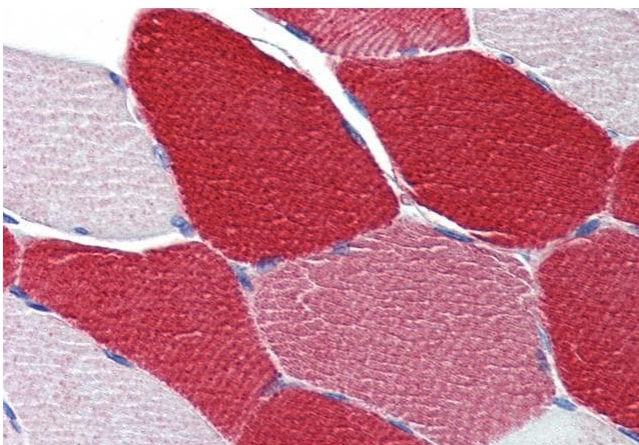
WB Suggested Anti-MYL6 Antibody Titration: 1 ug/ml  
 Positive Control: HepG2 cell lysate  
 MYL6 is supported by BioGPS gene expression data to be expressed in HepG2

**MYL6**



Rabbit Anti-MYL6  
 Sample Type: Human 721\_B  
 Antibody Concentration: 1ug/mL

Host: Rabbit  
 Target Name: MYL6  
 Sample Type: Human 721\_B  
 Antibody Dilution: 1.0ug/ml  
 MYL6 is supported by BioGPS gene expression data to be expressed in 721\_B



Anti-MYL6 antibody IHC of human skeletal muscle. Immunohistochemistry of formalin-fixed, paraffin-embedded tissue after heat-induced antigen retrieval. MYL6 Antibody TA357393 concentration 5 ug/ml.