

Product datasheet for **TA357391**

CELA2A Rabbit Polyclonal Antibody

Product data:

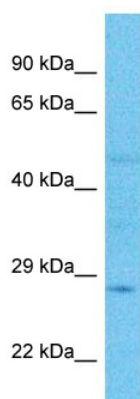
Product Type:	Primary Antibodies
Applications:	WB
Reactivity:	Human
Host:	Rabbit
Clonality:	Polyclonal
Immunogen:	The immunogen is a synthetic peptide directed towards the C-terminal region of Human CEL2A
Specificity:	Expected reactivity: Cow, Guinea Pig, Horse, Human, Mouse, Pig, Rabbit, Rat, Zebrafish Homology: Cow: 93%; Guinea Pig: 92%; Horse: 100%; Human: 100%; Mouse: 86%; Pig: 100%; Rabbit: 93%; Rat: 100%; Zebrafish: 82%
Formulation:	Liquid. Purified antibody supplied in 1x PBS buffer with 0.09% (w/v) sodium azide and 2% sucrose.
Concentration:	lot specific
Purification:	Affinity Purified
Conjugation:	Unconjugated
Storage:	For short term use, store at 2-8°C up to 1 week. For long term storage, store at -20°C in small aliquots to prevent freeze-thaw cycles.
Stability:	Shelf life: one year from despatch.
Predicted Protein Size:	29kDa
Gene Name:	chymotrypsin like elastase family member 2A
Database Link:	NP_254275 Entrez Gene 63036 Human P08217
Background:	Elastases form a subfamily of serine proteases that hydrolyze many proteins in addition to elastin. Humans have six elastase genes which encode the structurally similar proteins elastase 1, 2, 2A, 2B, 3A, and 3B. Like most of the human elastases, elastase 2A is secreted from the pancreas as a zymogen. In other species, elastase 2A has been shown to preferentially cleave proteins after leucine, methionine, and phenylalanine residues.



[View online »](#)

Synonyms: ELA2A; Elastase-2A; PE-1

Product images:



Host: Rabbit
Target Name: CEL2A
Sample Tissue: Large intestine Tumor Lysate
Antibody Dilution: 1.0 μ g/ml

Host: Rabbit
Target Name: CEL2A
Sample Type: Large intestine Tumor lysates
Antibody Dilution: 1.0ug/ml