

## Product datasheet for **TA357388**

### NUCKS1 Rabbit Polyclonal Antibody

#### Product data:

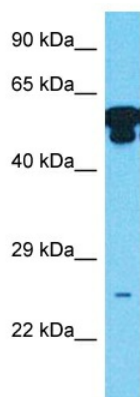
Product Type:	Primary Antibodies
Applications:	WB
Reactivity:	Human
Host:	Rabbit
Clonality:	Polyclonal
Immunogen:	The immunogen is a synthetic peptide directed towards the N-terminal region of Human NUCKS
Specificity:	<b>Expected reactivity:</b> Cow, Dog, Guinea Pig, Horse, Human, Mouse, Rabbit, Rat <b>Homology:</b> Cow: 100%; Dog: 100%; Guinea Pig: 100%; Horse: 100%; Human: 100%; Mouse: 100%; Rabbit: 100%; Rat: 100%
Formulation:	Liquid. Purified antibody supplied in 1x PBS buffer with 0.09% (w/v) sodium azide and 2% sucrose. <i>Note that this product is shipped as lyophilized powder to China customers.</i>
Concentration:	lot specific
Purification:	Affinity Purified
Conjugation:	Unconjugated
Storage:	For short term use, store at 2-8°C up to 1 week. For long term storage, store at -20°C in small aliquots to prevent freeze-thaw cycles.
Stability:	Shelf life: one year from despatch.
Predicted Protein Size:	26kDa
Gene Name:	nuclear casein kinase and cyclin-dependent kinase substrate 1
Database Link:	<a href="#">NP_073568</a> <a href="#">Entrez Gene 64710 Human</a> <a href="#">Q9H1E3</a>
Background:	This gene encodes a nuclear protein that is highly conserved in vertebrates. The conserved regions of the protein contain several consensus phosphorylation sites for casein kinase II and cyclin-dependent kinases, two putative nuclear localization signals, and a basic DNA-binding domain. It is phosphorylated in vivo by Cdk1 during mitosis of the cell cycle.



[View online »](#)

**Synonyms:** FLJ21480; FLJ32016; FLJ38536; JC7; NUCKS; P1

## Product images:



Host: Rabbit  
Target Name: NUCKS  
Sample Tissue: Stomach Tumor Lysate  
Antibody Dilution: 1.0µg/ml

Host: Rabbit  
Target Name: NUCKS  
Sample Type: Stomach Tumor lysates  
Antibody Dilution: 1.0ug/ml