

Product datasheet for **TA357386**

NECAB1 Rabbit Polyclonal Antibody

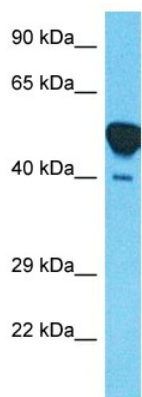
Product data:

| | |
|-------------------------|---|
| Product Type: | Primary Antibodies |
| Applications: | WB |
| Reactivity: | Human |
| Host: | Rabbit |
| Clonality: | Polyclonal |
| Immunogen: | The immunogen is a synthetic peptide directed towards the N-terminal region of Human NECA1 |
| Specificity: | Expected reactivity: Guinea Pig, Horse, Human, Mouse, Rabbit, Rat Homology: Guinea Pig: 100%; Horse: 100%; Human: 100%; Mouse: 100%; Rabbit: 93%; Rat: 100% |
| Formulation: | Liquid. Purified antibody supplied in 1x PBS buffer with 0.09% (w/v) sodium azide and 2% sucrose. <i>Note that this product is shipped as lyophilized powder to China customers.</i> |
| Concentration: | lot specific |
| Purification: | Affinity Purified |
| Conjugation: | Unconjugated |
| Storage: | For short term use, store at 2-8°C up to 1 week. For long term storage, store at -20°C in small aliquots to prevent freeze-thaw cycles. |
| Stability: | Shelf life: one year from despatch. |
| Predicted Protein Size: | 38kDa |
| Gene Name: | N-terminal EF-hand calcium binding protein 1 |
| Database Link: | NP_071746 Entrez Gene 64168 Human Q8N987 |
| Synonyms: | EFCBP1; STIP-1 |



[View online »](#)

Product images:



Host: Rabbit
Target Name: NECA1
Sample Tissue: Thymus Tumor Lysate
Antibody Dilution: 1.0µg/ml

Host: Rabbit
Target Name: NECA1
Sample Type: Thymus Tumor lysates
Antibody Dilution: 1.0ug/ml