

Product datasheet for **TA357385**

RRAGC Rabbit Polyclonal Antibody

Product data:

Product Type:	Primary Antibodies
Applications:	WB
Reactivity:	Human
Host:	Rabbit
Clonality:	Polyclonal
Immunogen:	The immunogen is a synthetic peptide directed towards the N-terminal region of Human RRAGC
Specificity:	Expected reactivity: Cow, Dog, Guinea Pig, Human, Mouse, Rat, Sheep Homology: Cow: 93%; Dog: 100%; Guinea Pig: 100%; Human: 100%; Mouse: 100%; Rat: 100%; Sheep: 100%
Formulation:	Liquid. Purified antibody supplied in 1x PBS buffer with 0.09% (w/v) sodium azide and 2% sucrose. <i>Note that this product is shipped as lyophilized powder to China customers.</i>
Concentration:	lot specific
Purification:	Affinity Purified
Conjugation:	Unconjugated
Storage:	For short term use, store at 2-8°C up to 1 week. For long term storage, store at -20°C in small aliquots to prevent freeze-thaw cycles.
Stability:	Shelf life: one year from despatch.
Predicted Protein Size:	43kDa
Gene Name:	Ras related GTP binding C
Database Link:	NP_071440 Entrez Gene 64121 Human Q9HB90



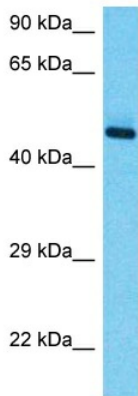
[View online »](#)

Background:

This gene encodes a member of the GTR/RAG GTP-binding protein family. The encoded protein is a monomeric guanine nucleotide-binding protein which forms a heterodimer with RRAGA and RRAGB and is primarily localized to the cytoplasm. The encoded protein promotes intracellular localization of the mTOR complex. Alternative splicing results in multiple transcript variants.

Synonyms:

FLJ13311; GTR2; RagC; TIB929

Product images:

Host: Rabbit
Target Name: RRAGC
Sample Tissue: Thymus Tumor Lysate
Antibody Dilution: 1.0µg/ml

Host: Rabbit
Target Name: RRAGC
Sample Type: Thymus Tumor lysates
Antibody Dilution: 1.0ug/ml