

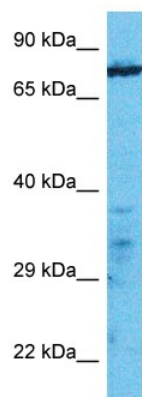
## Product datasheet for TA357384

### MAP1 (MOAP1) Rabbit Polyclonal Antibody

#### Product data:

Product Type:	Primary Antibodies
Applications:	WB
Reactivity:	Human
Host:	Rabbit
Clonality:	Polyclonal
Immunogen:	The immunogen is a synthetic peptide directed towards the C-terminal region of Human MOAP1
Specificity:	<b>Expected reactivity:</b> Human
Formulation:	Liquid. Purified antibody supplied in 1x PBS buffer with 0.09% (w/v) sodium azide and 2% sucrose.
Concentration:	lot specific
Purification:	Affinity Purified
Conjugation:	Unconjugated
Storage:	For short term use, store at 2-8°C up to 1 week. For long term storage, store at -20°C in small aliquots to prevent freeze-thaw cycles.
Stability:	Shelf life: one year from despatch.
Predicted Protein Size:	38kDa
Gene Name:	modulator of apoptosis 1
Database Link:	<a href="#">NP_071434</a> <a href="#">Entrez Gene 64112 Human</a> <a href="#">Q96BY2</a>
Background:	The protein encoded by this gene was identified by its interaction with apoptosis regulator BAX protein. This protein contains a Bcl-2 homology 3 (BH3)-like motif, which is required for the association with BAX. When overexpressed, this gene has been shown to mediate caspase-dependent apoptosis.
Synonyms:	MAP-1; MAP1; PNMA4

[View online »](#)

**Product images:**


Host: Rabbit  
 Target Name: MOAP1  
 Sample Tissue: Jurkat Cell Lysate  
 Antibody Dilution: 1.0µg/ml

Host: Rabbit  
 Target Name: MOAP1  
 Sample Type: Jurkat Whole Cell lysates  
 Antibody Dilution: 1.0ug/ml