

## Product datasheet for **TA357383**

### Parvin gamma (PARVG) Rabbit Polyclonal Antibody

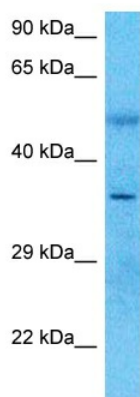
#### Product data:

Product Type:	Primary Antibodies
Applications:	WB
Reactivity:	Human
Host:	Rabbit
Clonality:	Polyclonal
Immunogen:	The immunogen is a synthetic peptide directed towards the C-terminal region of Human PARVG
Specificity:	<b>Expected reactivity:</b> Cow, Dog, Guinea Pig, Horse, Human, Mouse, Rat <b>Homology:</b> Cow: 100%; Dog: 100%; Guinea Pig: 100%; Horse: 93%; Human: 100%; Mouse: 100%; Rat: 100%
Formulation:	Liquid. Purified antibody supplied in 1x PBS buffer with 0.09% (w/v) sodium azide and 2% sucrose. <i>Note that this product is shipped as lyophilized powder to China customers.</i>
Concentration:	lot specific
Purification:	Affinity Purified
Conjugation:	Unconjugated
Storage:	For short term use, store at 2-8°C up to 1 week. For long term storage, store at -20°C in small aliquots to prevent freeze-thaw cycles.
Stability:	Shelf life: one year from despatch.
Predicted Protein Size:	36kDa
Gene Name:	parvin gamma
Database Link:	<a href="#">XP_005261759</a> <a href="#">Entrez Gene 64098 Human</a> <a href="#">Q9HBI0</a>
Background:	Members of the parvin family, including PARVG, are actin-binding proteins associated with focal contacts.
Synonyms:	gamma-parvin



[View online »](#)

## Product images:



Host: Rabbit  
Target Name: PARVG  
Sample Tissue: Large intestine Tumor Lysate  
Antibody Dilution: 1.0 $\mu$ g/ml

Host: Rabbit  
Target Name: PARVG  
Sample Type: Large intestine Tumor lysates  
Antibody Dilution: 1  $\mu$ g/ml