

Product datasheet for **TA357382**

SNX16 Rabbit Polyclonal Antibody

Product data:

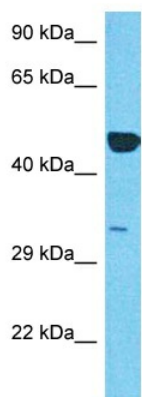
Product Type:	Primary Antibodies
Applications:	WB
Reactivity:	Human
Host:	Rabbit
Clonality:	Polyclonal
Immunogen:	The immunogen is a synthetic peptide directed towards the C-terminal region of Human SNX16
Specificity:	Expected reactivity: Cow, Dog, Guinea Pig, Horse, Human, Mouse, Rabbit, Rat Homology: Cow: 93%; Dog: 100%; Guinea Pig: 93%; Horse: 86%; Human: 100%; Mouse: 91%; Rabbit: 100%; Rat: 93%
Formulation:	Liquid. Purified antibody supplied in 1x PBS buffer with 0.09% (w/v) sodium azide and 2% sucrose. <i>Note that this product is shipped as lyophilized powder to China customers.</i>
Concentration:	lot specific
Purification:	Affinity Purified
Conjugation:	Unconjugated
Storage:	For short term use, store at 2-8°C up to 1 week. For long term storage, store at -20°C in small aliquots to prevent freeze-thaw cycles.
Stability:	Shelf life: one year from despatch.
Predicted Protein Size:	34kDa
Gene Name:	sorting nexin 16
Database Link:	NP_690050 Entrez Gene 64089 Human P57768-2
Background:	This gene encodes a member of the sorting nexin family. Members of this family contain a phox (PX) domain, which is a phosphoinositide binding domain, and are involved in intracellular trafficking. The function of this protein has not been determined. This gene results in three transcript variants encoding two distinct isoforms.



[View online »](#)

Synonyms: DKFZp666H147

Product images:



Host: Rabbit
 Target Name: SNX16
 Sample Tissue: Thymus Tumor Lysate
 Antibody Dilution: 1.0µg/ml

Host: Rabbit
 Target Name: SNX16
 Sample Type: Thymus Tumor lysates
 Antibody Dilution: 1.0ug/ml