

## Product datasheet for **TA357381**

### Gpbp1l1 Rabbit Polyclonal Antibody

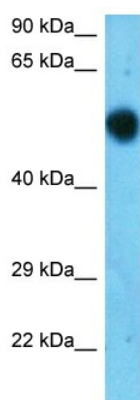
#### Product data:

Product Type:	Primary Antibodies
Applications:	WB
Reactivity:	Mouse
Host:	Rabbit
Clonality:	Polyclonal
Immunogen:	The immunogen for Anti-Gpbp1l1 antibody is: synthetic peptide directed towards the C-terminal of Mouse GPBL1
Specificity:	<b>Expected reactivity:</b> Mouse
Formulation:	Liquid. Purified antibody supplied in 1x PBS buffer with 0.09% (w/v) sodium azide and 2% sucrose.
Concentration:	lot specific
Purification:	Affinity purified
Conjugation:	Unconjugated
Storage:	For short term use, store at 2-8°C up to 1 week. For long term storage, store at -20°C in small aliquots to prevent freeze-thaw cycles.
Stability:	Shelf life: one year from despatch.
Predicted Protein Size:	52 kDa
Gene Name:	GC-rich promoter binding protein 1-like 1
Database Link:	<a href="#">XP_006503548.1</a> <a href="#">Entrez Gene 77110 Mouse</a> <a href="#">Q6NZP2</a>
Synonyms:	OTTHUMP00000038560; RP11-767N6.1; SP192



[View online »](#)

## Product images:



Host: Rabbit  
Target Name: GPBL1  
Sample Tissue: Mouse Brain Lysate  
Antibody Dilution: 2.0µg/ml

Host: Rabbit  
Target Name: GPBL1  
Sample Type: Mouse Brain  
Antibody Dilution: 1.0ug/ml