

Product datasheet for **TA357379**

C1orf114 (CCDC181) Rabbit Polyclonal Antibody

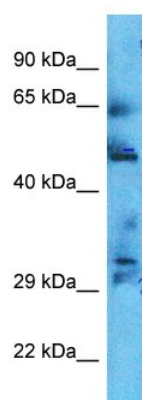
Product data:

Product Type:	Primary Antibodies
Applications:	WB
Reactivity:	Human
Host:	Rabbit
Clonality:	Polyclonal
Immunogen:	The immunogen is a synthetic peptide directed towards the N-terminal region of Human CC181
Specificity:	Expected reactivity: Cow, Dog, Guinea Pig, Horse, Human, Mouse, Pig, Rabbit, Rat Homology: Cow: 100%; Dog: 100%; Guinea Pig: 86%; Horse: 93%; Human: 100%; Mouse: 100%; Pig: 100%; Rabbit: 93%; Rat: 100%
Formulation:	Liquid. Purified antibody supplied in 1x PBS buffer with 0.09% (w/v) sodium azide and 2% sucrose.
Concentration:	lot specific
Purification:	Affinity purified
Conjugation:	Unconjugated
Storage:	For short term use, store at 2-8°C up to 1 week. For long term storage, store at -20°C in small aliquots to prevent freeze-thaw cycles.
Stability:	Shelf life: one year from despatch.
Predicted Protein Size:	55kDa
Gene Name:	coiled-coil domain containing 181
Database Link:	XP_005245440 Entrez Gene 57821 Human Q5TID7
Synonyms:	C1orf114; RP1-206D15.2



[View online »](#)

Product images:



Host: Rabbit
Target Name: CC181
Sample Tissue: Ovary Tumor Lysate
Antibody Dilution: 1.0 μ g/ml

Host: Rabbit
Target Name: CC181
Sample Type: Ovary Tumor lysates
Antibody Dilution: 1.0 μ g/ml