

Product datasheet for **TA357373**

Wdfy1 Rabbit Polyclonal Antibody

Product data:

Product Type:	Primary Antibodies
Applications:	WB
Reactivity:	Human, Mouse
Host:	Rabbit
Clonality:	Polyclonal
Specificity:	Expected reactivity: Cow, Dog, Guinea Pig, Horse, Human, Mouse, Rabbit, Rat, Zebrafish Homology: Cow: 100%; Dog: 93%; Guinea Pig: 100%; Horse: 100%; Human: 100%; Mouse: 100%; Rabbit: 100%; Rat: 100%; Zebrafish: 86%
Formulation:	Liquid. Purified antibody supplied in 1x PBS buffer with 0.09% (w/v) sodium azide and 2% sucrose.
Concentration:	lot specific
Purification:	Affinity Purified
Conjugation:	Unconjugated
Storage:	For short term use, store at 2-8°C up to 1 week. For long term storage, store at -20°C in small aliquots to prevent freeze-thaw cycles.
Stability:	Shelf life: one year from despatch.
Predicted Protein Size:	21kDa
Gene Name:	WD repeat and FYVE domain containing 1
Database Link:	NP_081333 Entrez Gene 57590 Human Entrez Gene 69368 Mouse Q9DAD3
Background:	The function of this protein remains unknown.
Synonyms:	FENS-1; KIAA1435; WDF1; ZFYVE17

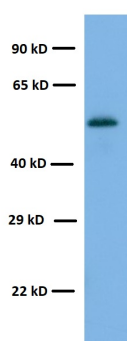


[View online »](#)

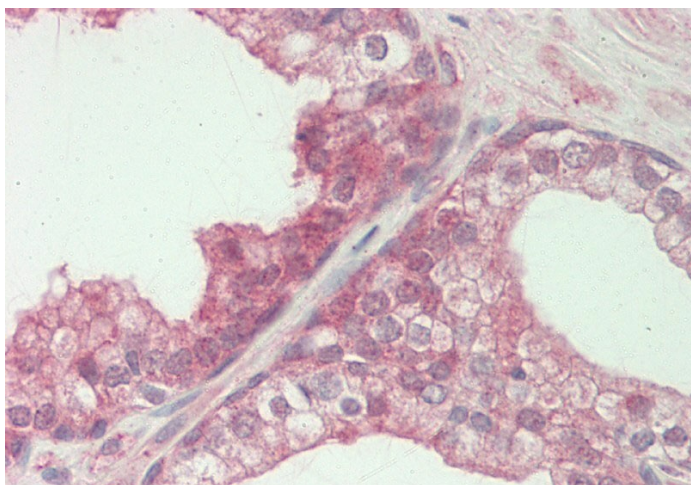
Product images:



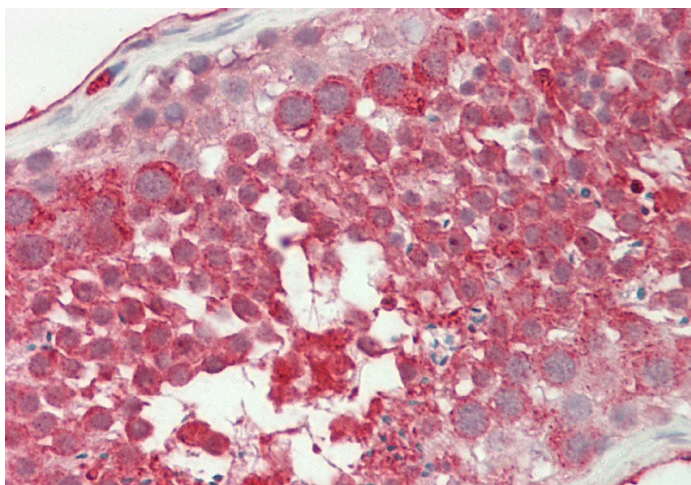
WB Suggested Anti-Wdfy1 Antibody
Titration: 1.0 ug/ml
Positive Control: Mouse Heart



WB Suggested Anti-Wdfy1 Antibody
Titration: 1.0 ug/ml
Positive Control: Human kidney



Rabbit Anti-Wdfy1 antibody
Catalog Number: ARP57466
Formalin Fixed Paraffin Embedded Tissue:
Human Prostate
Primary antibody Concentration: 10 ug/ml



Rabbit Anti-Wdfy1 antibody
Catalog Number: ARP57466
Formalin Fixed Paraffin Embedded Tissue:
Human Testis
Primary antibody Concentration: 10 ug/ml