

Product datasheet for TA357370

C14orf124 (SDR39U1) Rabbit Polyclonal Antibody

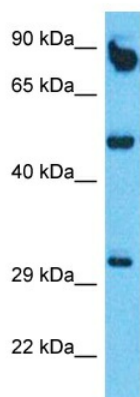
Product data:

Product Type:	Primary Antibodies
Applications:	WB
Reactivity:	Human
Host:	Rabbit
Clonality:	Polyclonal
Immunogen:	The immunogen is a synthetic peptide directed towards the middle region of Human SDR39U1
Specificity:	Expected reactivity: Cow, Dog, Guinea Pig, Horse, Human, Mouse, Rabbit, Rat Homology: Cow: 100%; Dog: 100%; Guinea Pig: 100%; Horse: 100%; Human: 100%; Mouse: 92%; Rabbit: 100%; Rat: 100%
Formulation:	Liquid. Purified antibody supplied in 1x PBS buffer with 0.09% (w/v) sodium azide and 2% sucrose.
Concentration:	lot specific
Purification:	Affinity Purified
Conjugation:	Unconjugated
Storage:	For short term use, store at 2-8°C up to 1 week. For long term storage, store at -20°C in small aliquots to prevent freeze-thaw cycles.
Stability:	Shelf life: one year from despatch.
Predicted Protein Size:	32kDa
Gene Name:	short chain dehydrogenase/reductase family 39U member 1
Database Link:	NP_064580 Entrez Gene 56948 Human Q9NRG7-2
Background:	This gene encodes a member of the short-chain dehydrogenases/reductases (SDR) superfamily, which includes both classical and extended types. The encoded protein represents an extended type, with similarity to epimerases. Alternatively spliced transcript variants that encode different protein isoforms have been described.
Synonyms:	C14orf124; HCDI



[View online »](#)

Product images:



Host: Rabbit
Target Name: SDR39U1
Sample Tissue: Thymus Tumor Lysate
Antibody Dilution: 1.0 μ g/ml

Host: Rabbit
Target Name: SDR39U1
Sample Type: Thymus Tumor lysates
Antibody Dilution: 1.0ug/ml